

STAGE 2 CREATIVE ARTS
PHOTOGRAPHY
ASSESSMENT TYPE 3: PRACTICAL SKILLS FOLIO
STUDENT RESPONSE

"Assessment type 3" Practical Skills Folio

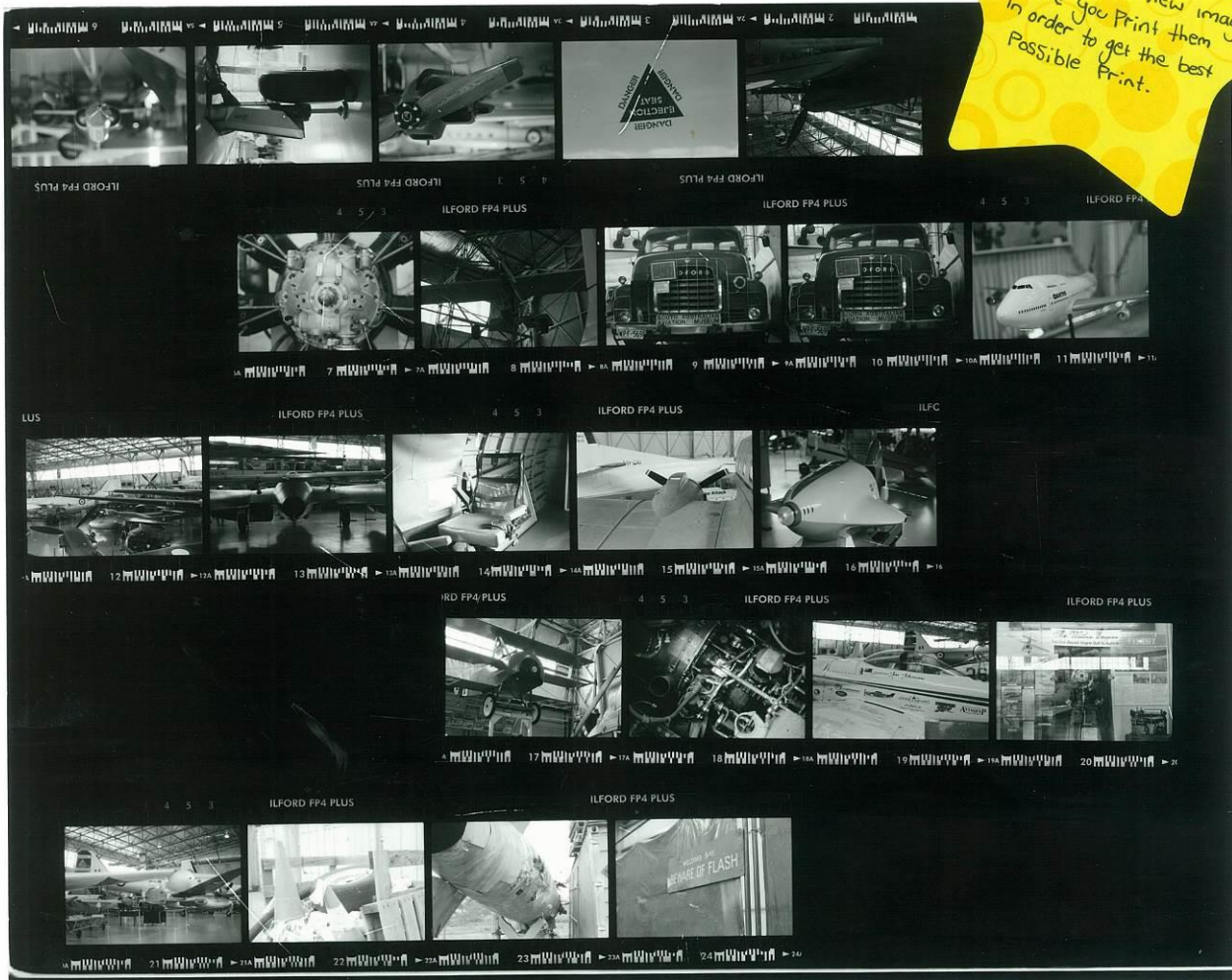
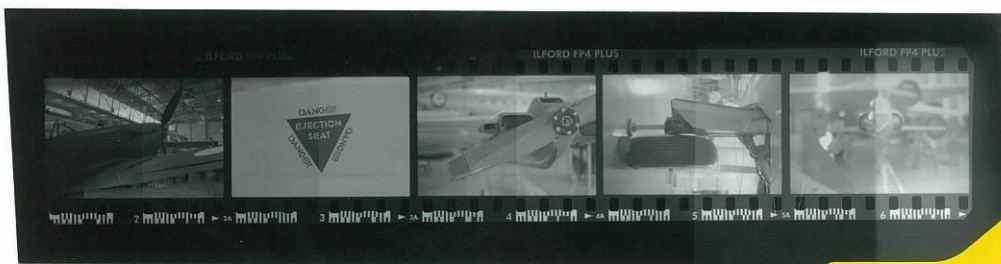
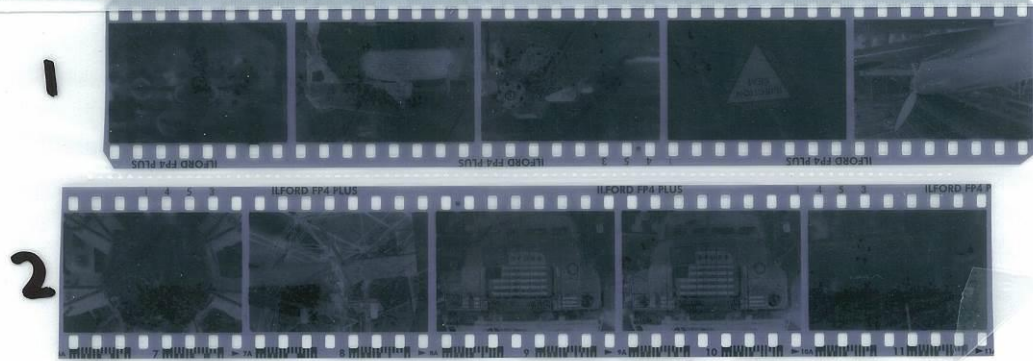
Contents

Evidence

1. Negative file, contact test strip, contact sheet, final without filter
2. First printing trials and filtration
3. Short depth of field
4. Mapping/working print/dodging and burning
5. Long depth of field
6. Freeze Frame
7. Motion blur
8. 4-7 Mount cutting
9. Digital contact sheets
10. Digital test strips and colour management
11. Toning
12. Reticulation

First Contact Sheet

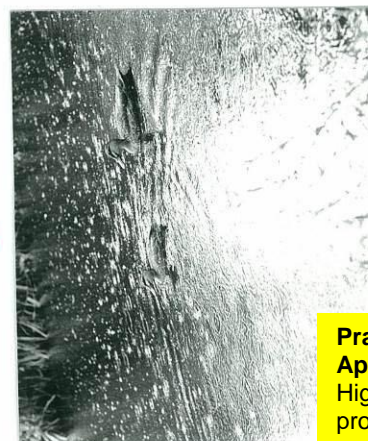
NEGATIVE PRESERVERS
 DATE 24/3/14 NO. NO. SUBJECT Aviation FILE NO. 2



Contact Sheets are a good way to view images before you print them in order to get the best possible print.

Filters 00-3½

Test Strip



Exposure Intervals: 5 seconds

Exposure Time: 25 seconds

Aperture: F3.5 = f8

Enlarger Height: 18cm

Paper: Mg IV (Gloss)

Enlarger: LPL 6600

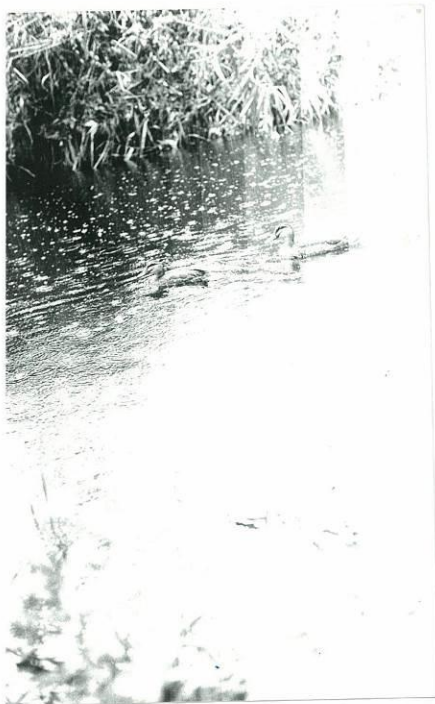
Film: FP4 125 150

Practical Application
Highly productive and proactive approaches to the creative arts process.

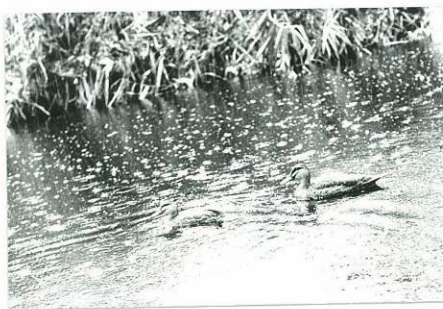
Practical Application
Creative and clear expression and communication of ideas and opinions relevant to the program focus.

Practical Application
Highly productive and proactive approaches to the creative arts process.

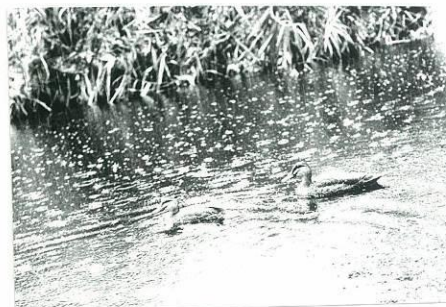
Investigation and Analysis
Astute and detailed exploration and analysis of appropriate creative arts media, materials, techniques, processes, and technologies within and/or across creative arts forms.



4

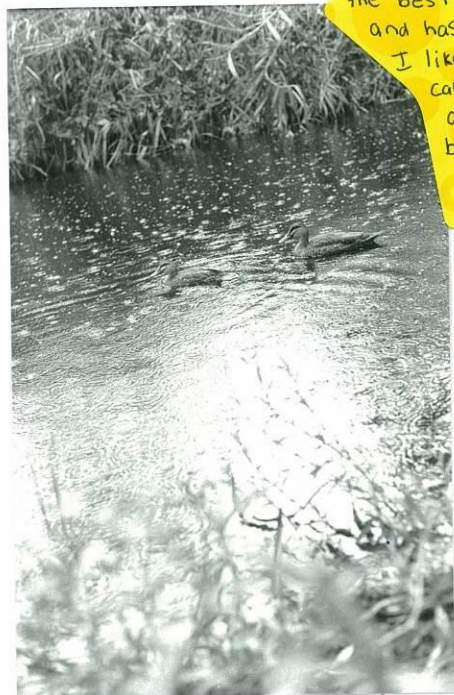


4 1/2



5

I have chosen to use filter 1 1/2 for my final image. It gave the best clarity of the set and has good contrast. I like that I have captured the water droplets in the water by using a fast shutter speed.



The contrast of a photo is changed by the filter number used. Filters provide the simplest way of controlling the contrast providing a large possible range.

Looking at my photos that I have exposed with different filters I can see the blacks are becoming darker and the overall image is gaining more contrast as the filter number recrases.

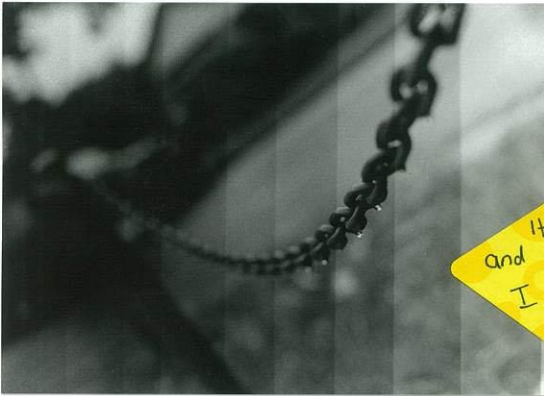
Once I got to filter 4 I had to make a new test Strip So I knew how long to expose them for. Filters 00-3 1/2 require the same exposure; filters 4, 4 1/2 and 5 require somewhere between 1.6 to 2 times as much exposure.

Height: 18cm
Aperture: F3 \downarrow \equiv F8
Filter: 1 1/2
Exposure time: 30 seconds

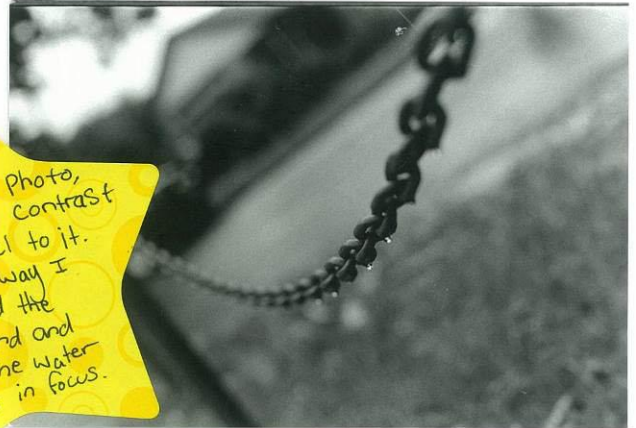
I think the use of filters is very helpful. It lets you control the contrast of the whole image and gain the look you are after.

Evaluation
Insightful critical reflection on personal creative arts ideas, processes, and products.

First Printing Trials (without filters)



I really like this photo. It has good contrast and a nice feel to it. I like the way I have blurred the background and kept the water droplets in focus.



Enlarger Height: 16cm
Aperture: $F3 \downarrow \equiv F8$
Camera: K1000

Exposure time: 20 seconds

Shooting conditions: overcast, light showers with little to no sun.

These are my first printing trials. They were taken on one of my first lessons of the course at the start of the year. It was my first time using a film camera and it was really interesting.

Practical Application
Creative and clear expression and communication of ideas and opinions relevant to the program focus.



I think this photo of some ducks in the creek is a little underexposed. It would have been beneficial if I dodged some areas for less time to reveal the subject matter (Ducks)



Enlarger Height: 15cm
Aperture: $F2 \downarrow \equiv F5.6$

Exposure Time: 25 seconds

Short Depth Of Field

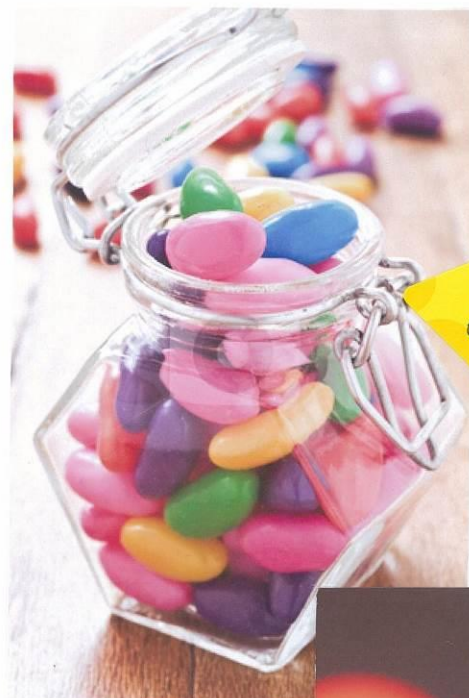
The dragonfly in **picture 1** has been isolated from its chaotic surroundings by using shallow depth of field. By using shallow depth of field the distracting background is blurred and only the dragonfly appears sharp. Viewers eyes concentrate first on the sharp areas of the photo and so the dragonfly gets all the attention.



Picture 1. The subject can be isolated from its background by using shallow dept of field.

Investigation and Analysis

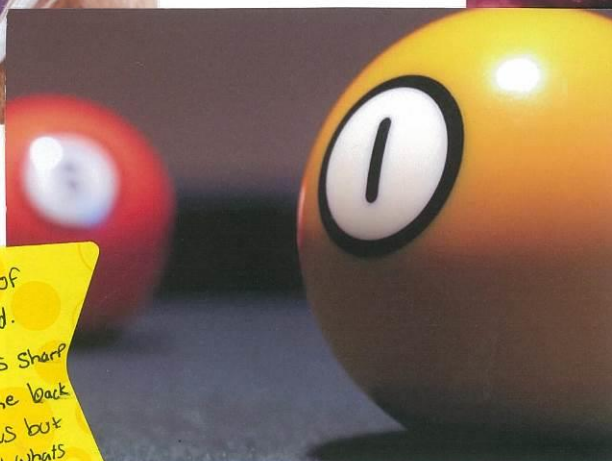
Purposeful selection, critical analysis, and full acknowledgment of a variety of appropriate sources and ideas.



I like the concept of these two photos. They are simple yet effective.



This is a good example of short depth of field. The foreground is sharp and in focus. The back is out of focus but you still know what's there.



Evaluation

Insightful and knowledgeable evaluation of creative arts products, with reference to practitioners, intentions, processes, outcomes, and contexts.

Depth of field refers to the range of distance that appears acceptably sharp. It varies depending on camera type, aperture and focusing distance, although print size and viewing distance can also influence our perception of depth of field.



Final Image

I like the way this image jumps out the page. The way I have positioned the camera makes the model plane look alot bigger then it really is. I am slightly dissappointed that my film got a scratch on it resulting in the small mark at the middle bottom of the print.

Practical Application
Refined and integrated development and application of a variety of practical skills, techniques, and processes.

Filter
2

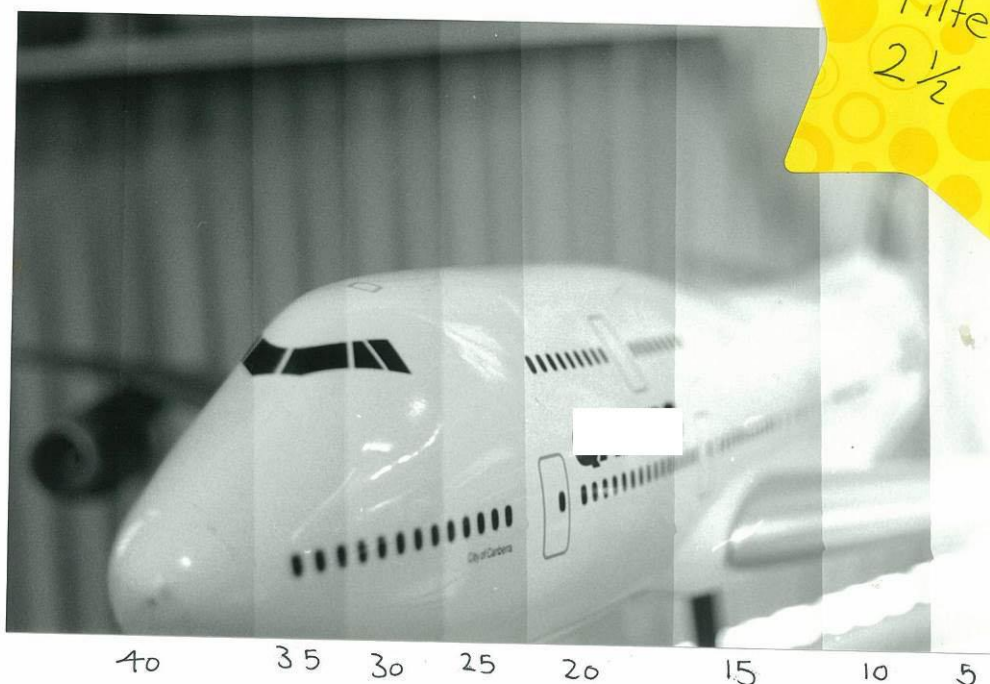


Height: $35\frac{1}{2}$ cm

Aperture: F2 ↓

Exposure intervals: 5 seconds

After printing my first test Strip I wasn't very happy with the contrast I got. I was using Filter 2 so I decided to move up to Filter $2\frac{1}{2}$. By doing this it increased the blacks and made the print more eye catching.



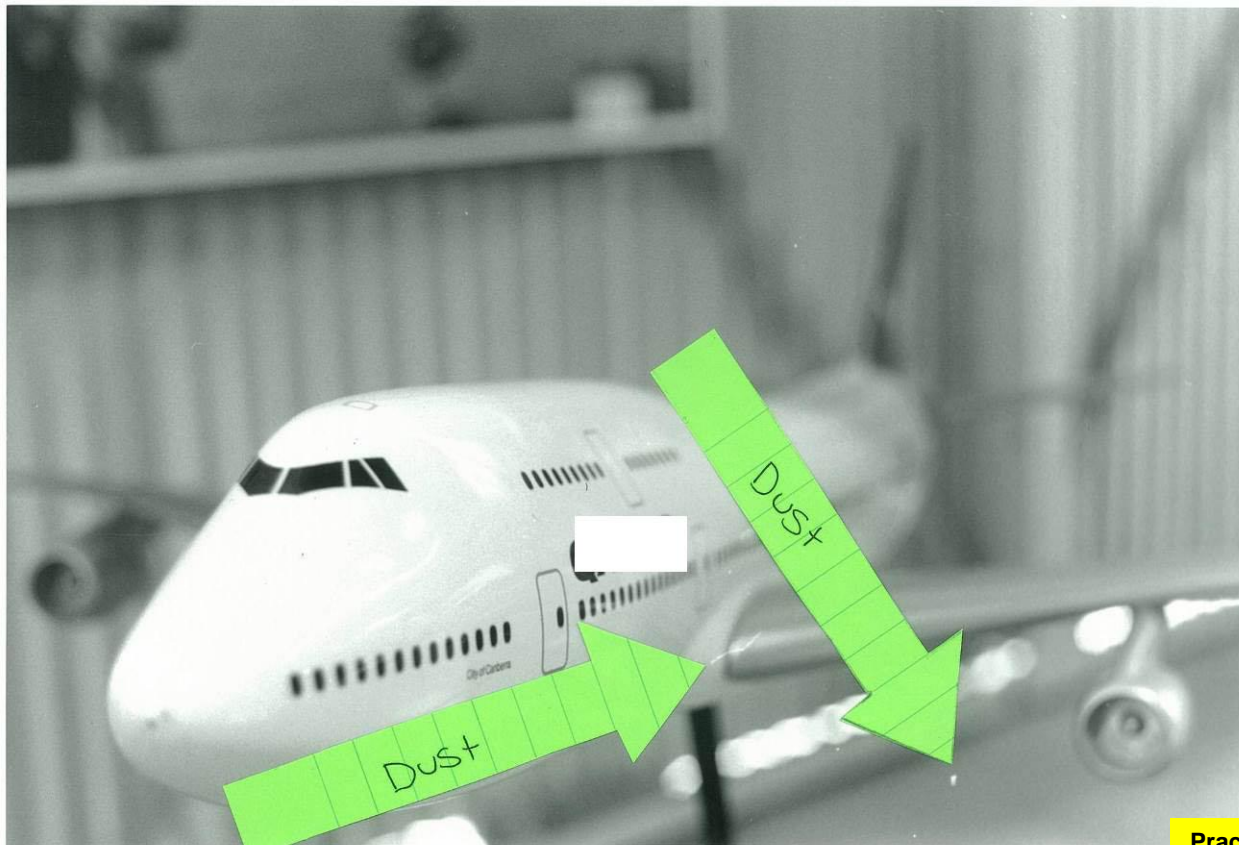
Filter
 $2\frac{1}{2}$

Practical Application
Creative and clear expression and communication of ideas and opinions relevant to the program focus.

Practical Application
Highly productive and proactive approaches to the creative arts process.

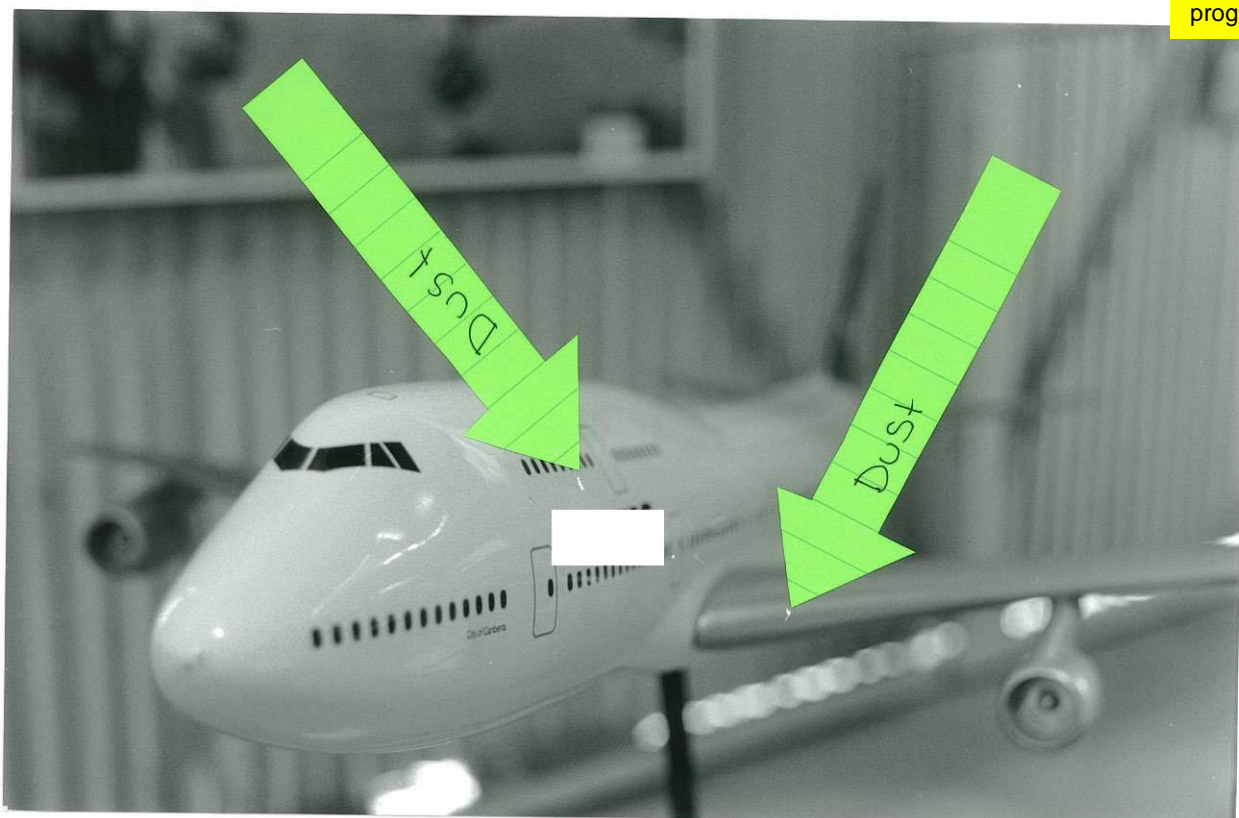
Investigation and Analysis
Astute and detailed exploration and analysis of appropriate creative arts media, materials, techniques, processes, and technologies within and/or across creative arts forms.

Evaluation
Insightful critical reflection on personal creative arts ideas, processes, and products.



These images both show results of there being dust on the negative. I didn't want these on my final image so I had to clean the negative with a soft brush. I had to repeat this process as I did not remove all the dust the first few times.

Practical Application
Creative and clear expression and communication of ideas and opinions relevant to the program focus.



Long Depth Of Field

Usually it is good for landscape photos if all parts of the image appear sharp. There is usually no need to isolate elements by utilizing the depth of field in the landscape photos. All around sharp photo can be achieved by using large depth of field. In order to get large depth of field you should use rather small aperture. This also means that you must decrease the shutter speed. Therefore it's often necessary to use tripod when taking landscape photos.

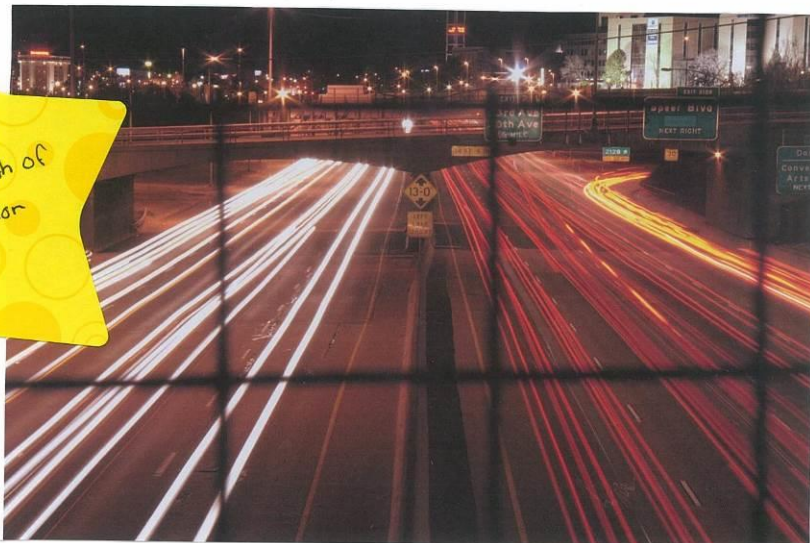


Picture 2. It's usually a good idea to use great depth of field in landscape photos so that all areas of the photo appear sharp.

Investigation and Analysis

Purposeful selection, critical analysis, and full acknowledgment of a variety of appropriate sources and ideas.

This image is an example of both long depth of field and motion blur.



Evaluation

Insightful and knowledgeable evaluation of creative arts products, with reference to practitioners, intentions, processes, outcomes, and contexts.



Nice Vibrant Colours



I like how this image leads your eye down the path. It also has good tonal range.

Final Image

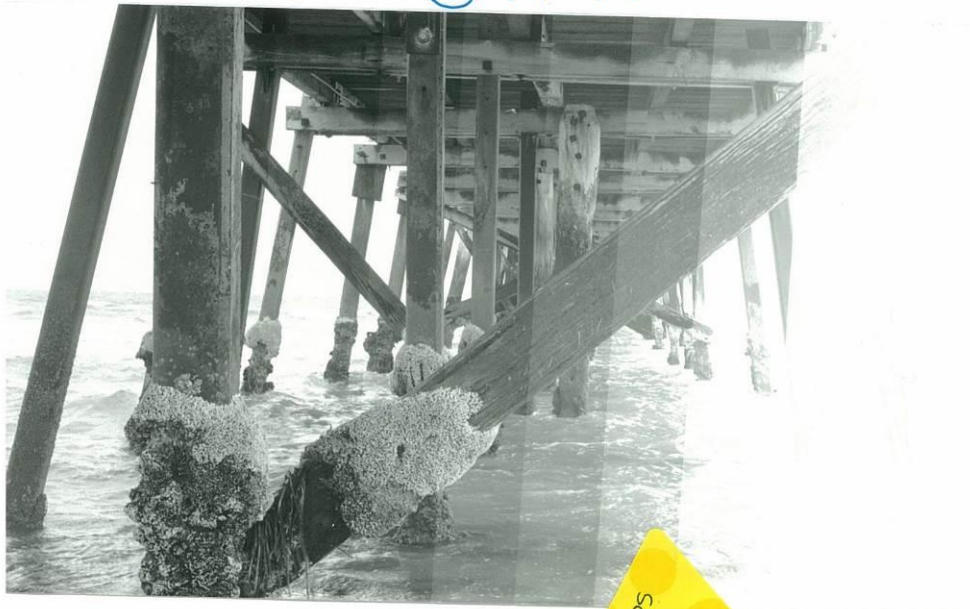
I really like this image. I think I have got the contrast just right and paid great attention to detail. Even though it was a very overcast day I have managed to let enough light through the camera to achieve a good overall tonal range.

Practical Application
Refined and integrated development and application of a variety of practical skills, techniques, and processes.



Evaluation
Insightful critical reflection on personal creative arts ideas, processes, and products.

Test Strip



-Enlarger Number 11

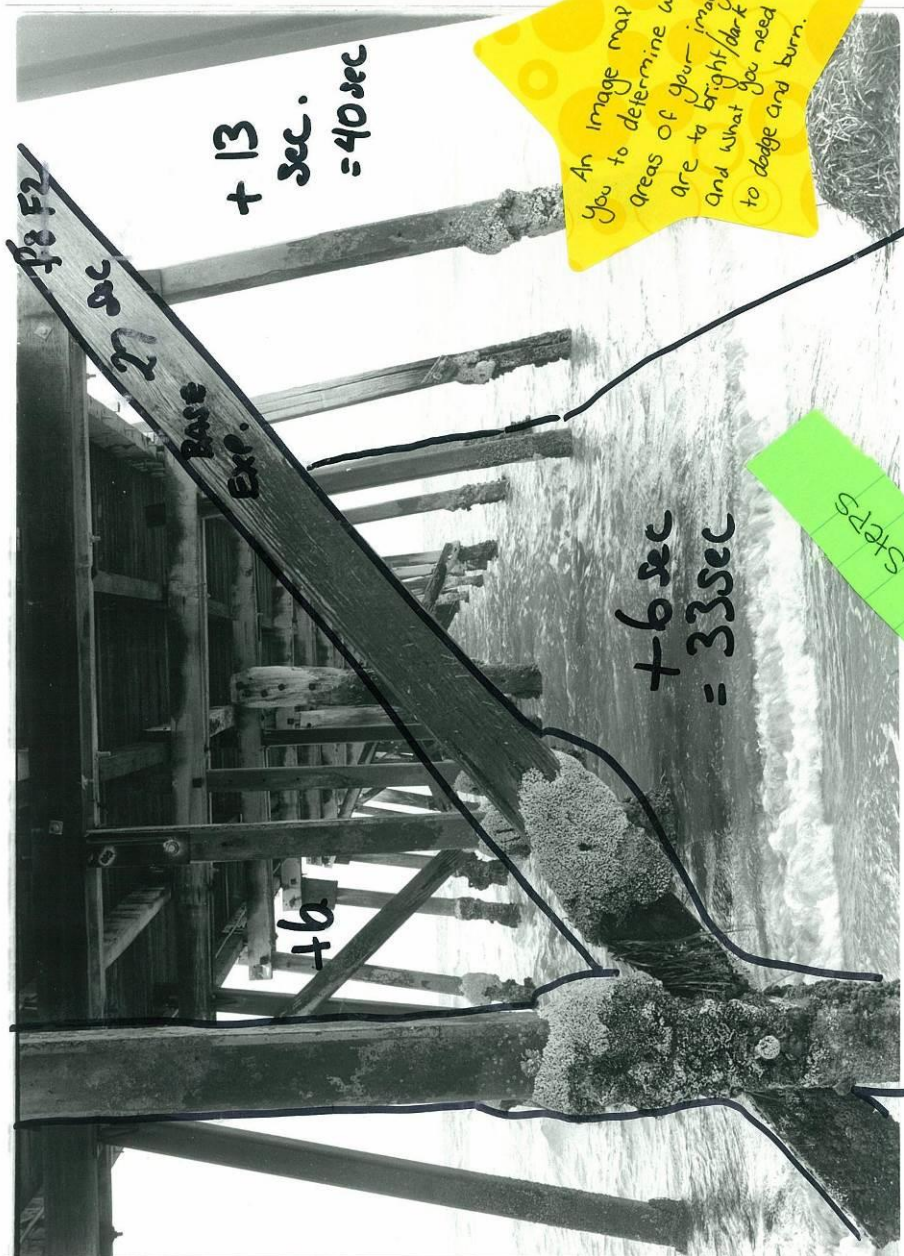
Aperture - F3 ↓

Filter - 2

Enlarger Height - 35cm

Exposure Intervals
5 secs

Practical Application
Highly productive and proactive approaches to the creative arts process.



An image map helps you to determine what areas of your image are to bright/dark and what you need to dodge and burn.

Aperture - F3 ↓
Filter - 2
Enlarger Height - 35cm
Enlarger number - 15
Exposure time - 35 secs

- EXP
- ① 27 secs Whole Print
 - ② +6 secs to all but foreground struts.
 - ③ Dodge left side coral + underneath + added 7 secs to R.H.S

IMAGE MAP

Test Strips

To determine exposure time



Aperture - $F2 \downarrow \equiv f5.6$

Filter - $2\frac{1}{2}$

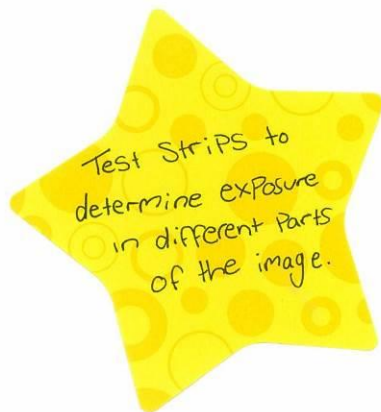
Exposure time - 18 secs

Exposure Intervals - 5 secs

Enlarger Height - 35 cm

$= 18 + 25 = 43 \text{ seconds}$
exposure

Practical Application
Creative and clear expression and communication of ideas and opinions relevant to the program focus.



Aperture - $F2 \downarrow$

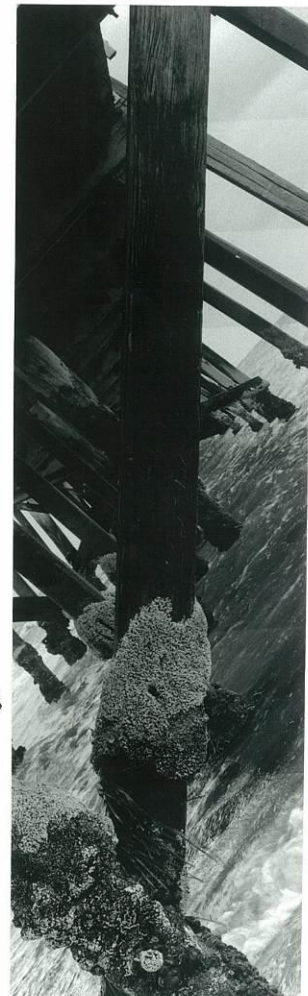
Filter - $2\frac{1}{2}$

Exposure time - 18 secs

Exposure Intervals - 5 secs

Enlarger Height - 35 cm

$= 18 + 15 = 33 \text{ seconds}$
exposure

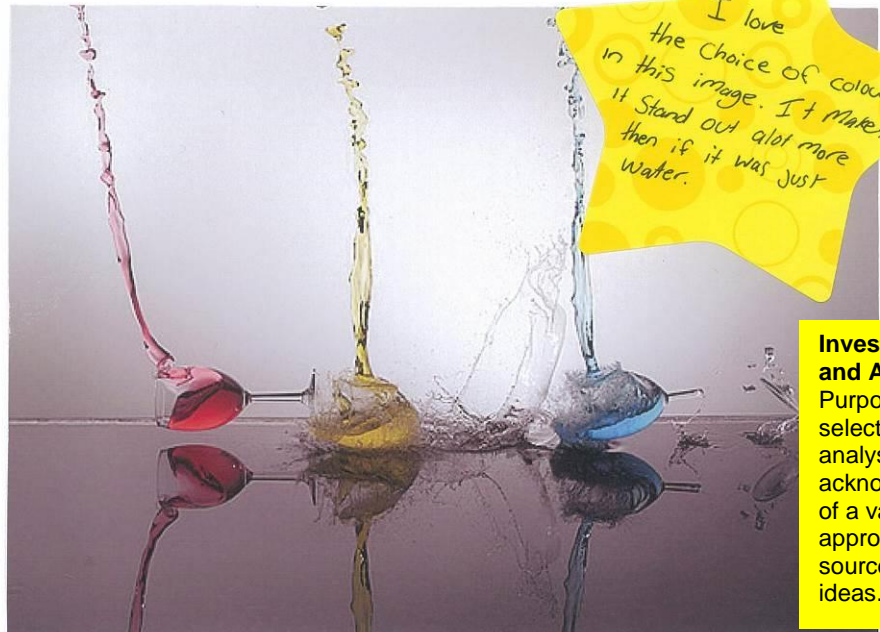


Freeze Frame



This image of a paintball exploding is really cool. The splatter is really clear and sharp so a fast shutter speed would have to have been used.

Freeze frame is when you take a photo of something using a fast shutter speed. The image will look like it is frozen and the viewer will know that the object is in motion but has been frozen by the shutter.



I love the choice of colour in this image. It makes it stand out a lot more than if it was just water.

Investigation and Analysis

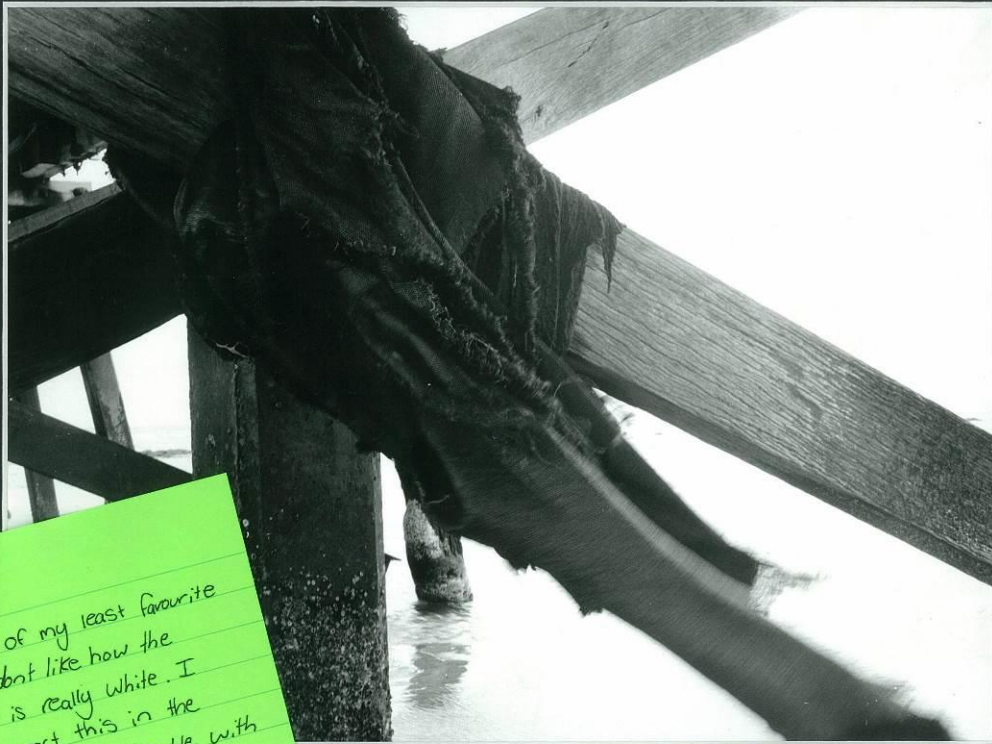
Purposeful selection, critical analysis, and full acknowledgment of a variety of appropriate sources and ideas.



I actually don't know what this is but it is a very good example of freeze frame.

Evaluation

Insightful and knowledgeable evaluation of creative arts products, with reference to practitioners, intentions, processes, outcomes, and contexts.



This is one of my least favourite photos. I don't like how the background is really white. I tried to correct this in the dark room but had trouble with it. I do like the detail of the beams though. They are very well focused and have good contrast.

Evaluation

Insightful critical reflection on personal creative arts ideas, processes, and products.

Practical Application

Refined and integrated development and application of a variety of practical skills, techniques, and processes.



Height: 35 cm
 Filter: 3
 Aperture: F3↓
 Exposure intervals: 5 seconds

After printing my first test strip I could see that the background of my image was really white. This could have been caused from the camera facing the sun when I took the photo. To try and bring back some of the background I made a test strip along the problem area.

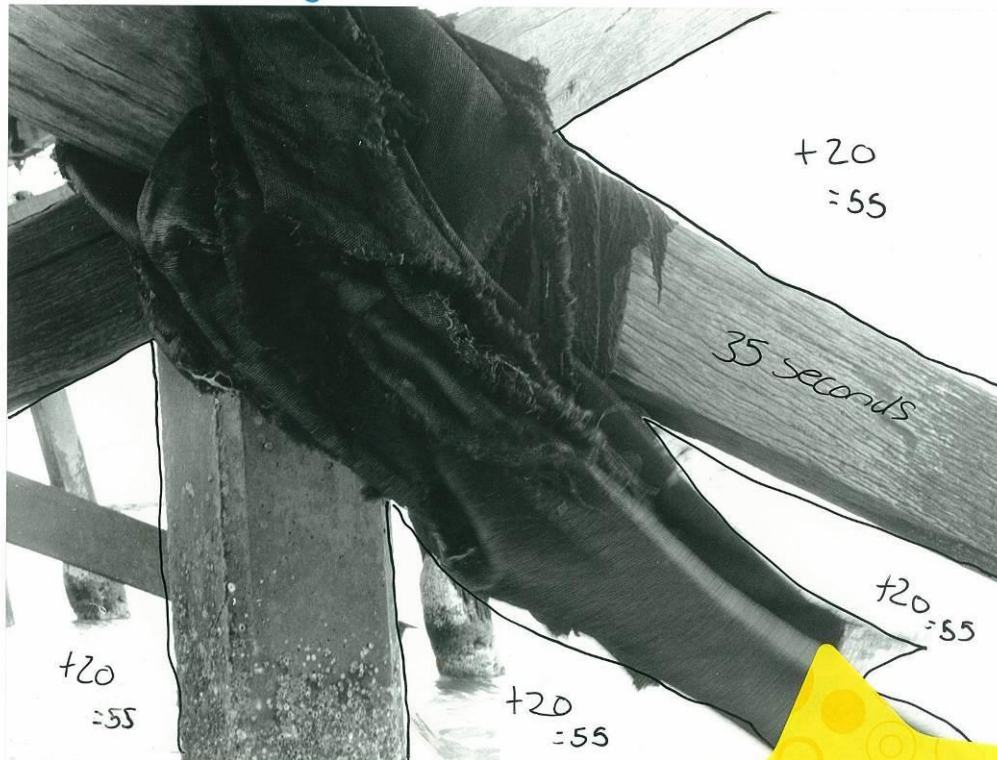
Test strip to determine dodging and burning



Practical Application
 Creative and clear expression and communication of ideas and opinions relevant to the program focus.

Practical Application
 Highly productive and proactive approaches to the creative arts process.

Image map



Practical Application
Creative and clear expression and communication of ideas and opinions relevant to the program focus.

Practical Application
Highly productive and proactive approaches to the creative arts process.

This image map shows that I have exposed the whole print for 35 seconds and I will expose the outlined areas for an extra 20 seconds to even out the whites. I will do this by covering the areas I don't want to expose and then adding an extra 20 seconds. To cover the areas I roughly cut the shape of the beams and cloth out of some black paper and held it over the top while moving it up and down so I didn't create any hard edges. I done this in the dark room while adding the extra seconds.

Motion Blur

I really like this Photo. The coloured lines on the train are in the same spot along the train so they stay in focus.

Image removed due to copyright.

Investigation and Analysis
Purposeful selection, critical analysis, and full acknowledgment of a variety of appropriate sources and ideas.

Motion blur is displayed in an image when an object or the camera is moving when the photo is taken. Motion blur is most noticeable when the camera is set to a slow shutter speed or one object is stationary while the rest is moving.

Image removed due to copyright.

Evaluation
Insightful and knowledgeable evaluation of creative arts products, with reference to practitioners, intentions, processes, outcomes, and contexts.

Image removed due to copyright.

The camera would have been mounted on the trolley in this photo while the photographer ran down the supermarket aisle.

Final Image

This is one of my favourite photos. The carousel has so much detail which made it an interesting piece to photograph. I am happy with my dodging and burning results and the overall outcome of my photo. Using filter 2 has given me soft greys rather than blacks which I am really pleased with.

Evaluation

Insightful critical reflection on personal creative arts ideas, processes, and products.

Practical Application

Refined and integrated development and application of a variety of practical skills, techniques, and processes.



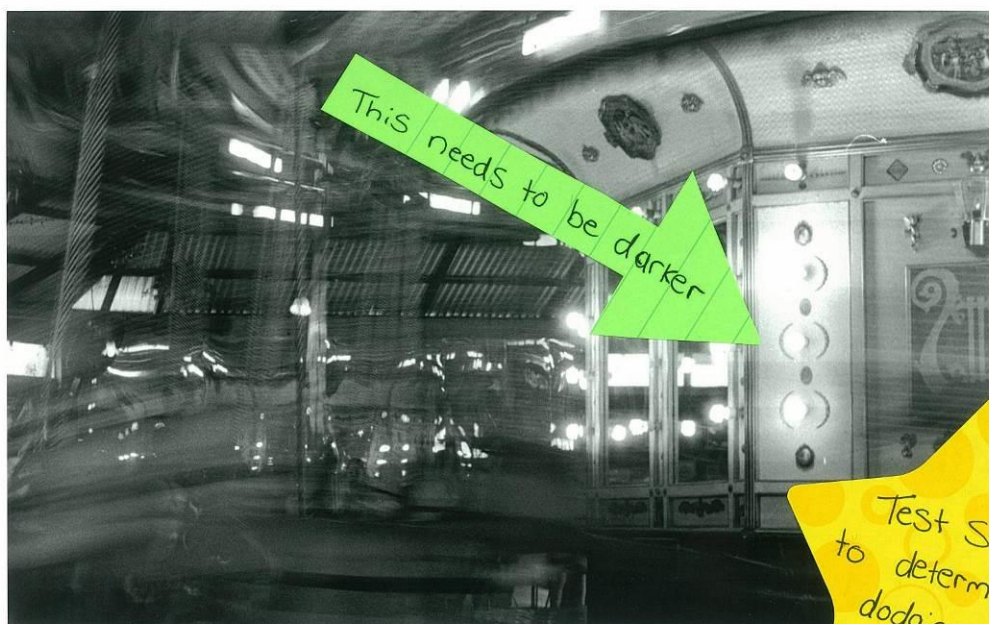


Practical Application
Creative and clear expression and communication of ideas and opinions relevant to the program focus.

Practical Application
Highly productive and proactive approaches to the creative arts process.

Height: 25 cm
Aperture: F2 ↓
Filter: 2
Exposure intervals: 5 Seconds

I decided to do a full page test strip for this image because I wanted to be able to see all the small detail.



This needs to be darker

Test Strip to determine dodging and burning.

Images removed due to copyright.

Appuru
Pai

Long exposure
of
Yurikamome
Transit.

Tokyo

**Practical
Application**
Creative and
clear
expression and
communication
of ideas and
opinions
relevant to the
program focus.

Image Map



This image map shows that I exposed the outlined area for an extra 20 seconds. It is too bright so the extra 20 seconds in that area will darken the whites and even out the contrast.

Digital Contact Sheets

Largs Bay Beach - 28th of June 2011



IMGP1227.PEF



IMGP1228.PEF



IMGP1229.PEF



IMGP1231.PEF



IMGP1232.PEF



IMGP1233.PEF



IMGP1234.PEF



IMGP1235.PEF



IMGP1236.PEF



IMGP1237.PEF



IMGP1238.PEF



IMGP1239.PEF



IMGP1240.PEF



IMGP1241.PEF



IMGP1242.PEF



IMGP1243.PEF



IMGP1245.PEF



IMGP1246.PEF



IMGP1247.PEF



IMGP1248.PEF



IMGP1249.PEF



IMGP1250.PEF



IMGP1251.PEF



IMGP1252.PEF



IMGP1253.PEF



IMGP1254.PEF



IMGP1255.PEF



IMGP1256.PEF



IMGP1257.PEF



IMGP1258.PEF



IMGP1259.PEF



IMGP1260.PEF



IMGP1262.PEF



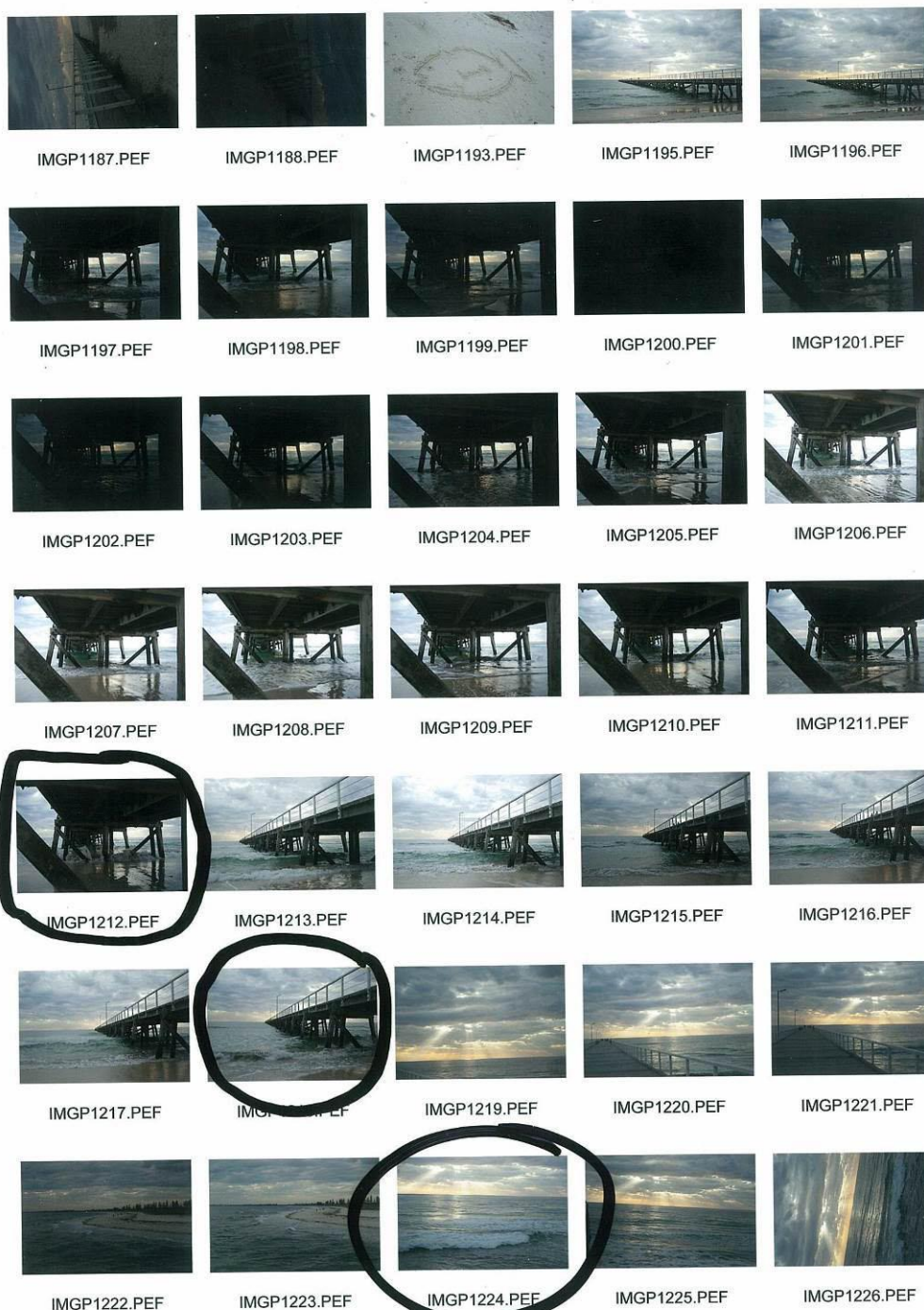
IMGP1263.PEF



IMGP1264.PEF

Practical Application
Highly productive and proactive approaches to the creative arts process.

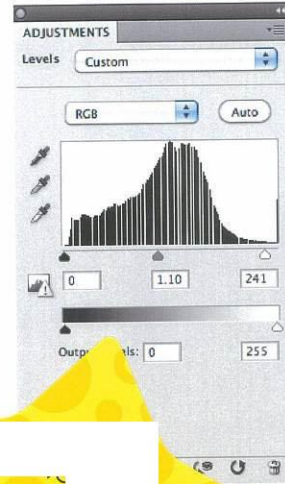
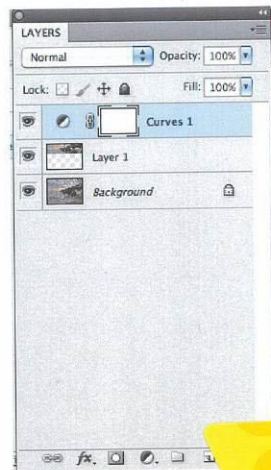
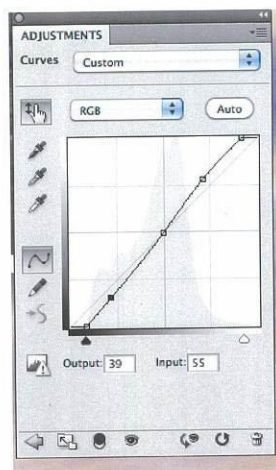
Just like black and white Contact Sheets, digital Contact Sheets are a great way to look at all your images at the same time to compare and decide which ones you want to use. Digital Contact Sheets are generated through the use of and



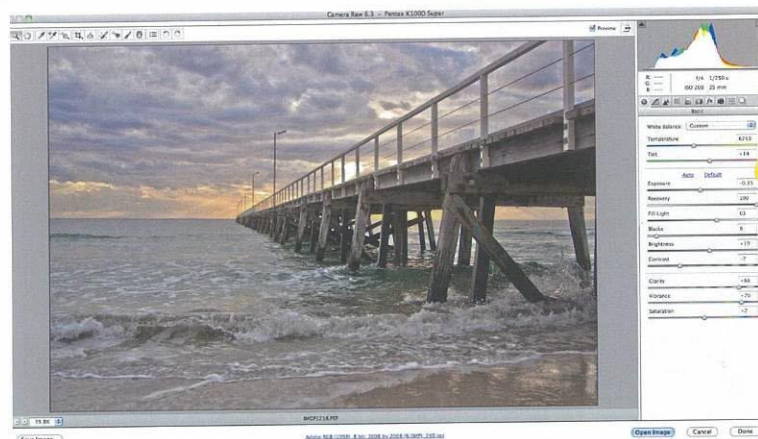
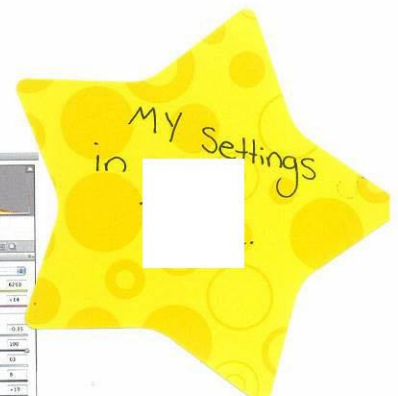
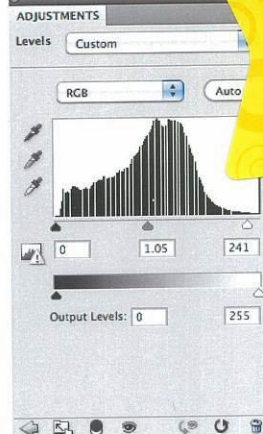
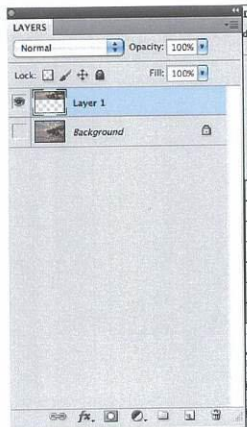
Practical Application
Creative and clear expression and communication of ideas and opinions relevant to the program focus.

Digital Test Strips & Colour Management

This is a record of colour management for my photo. The screen grabs below show my adjustments that I made and the settings I chose for the photo. I changed the curves, brightness and clarity to get the best possible contrast, colours and overall tonal range for my photo.



Practical Application
Highly productive and proactive approaches to the creative arts process.





Practical Application
Creative and clear expression and communication of ideas and opinions relevant to the program focus.



Practical Application
Highly productive and proactive approaches to the creative arts process.



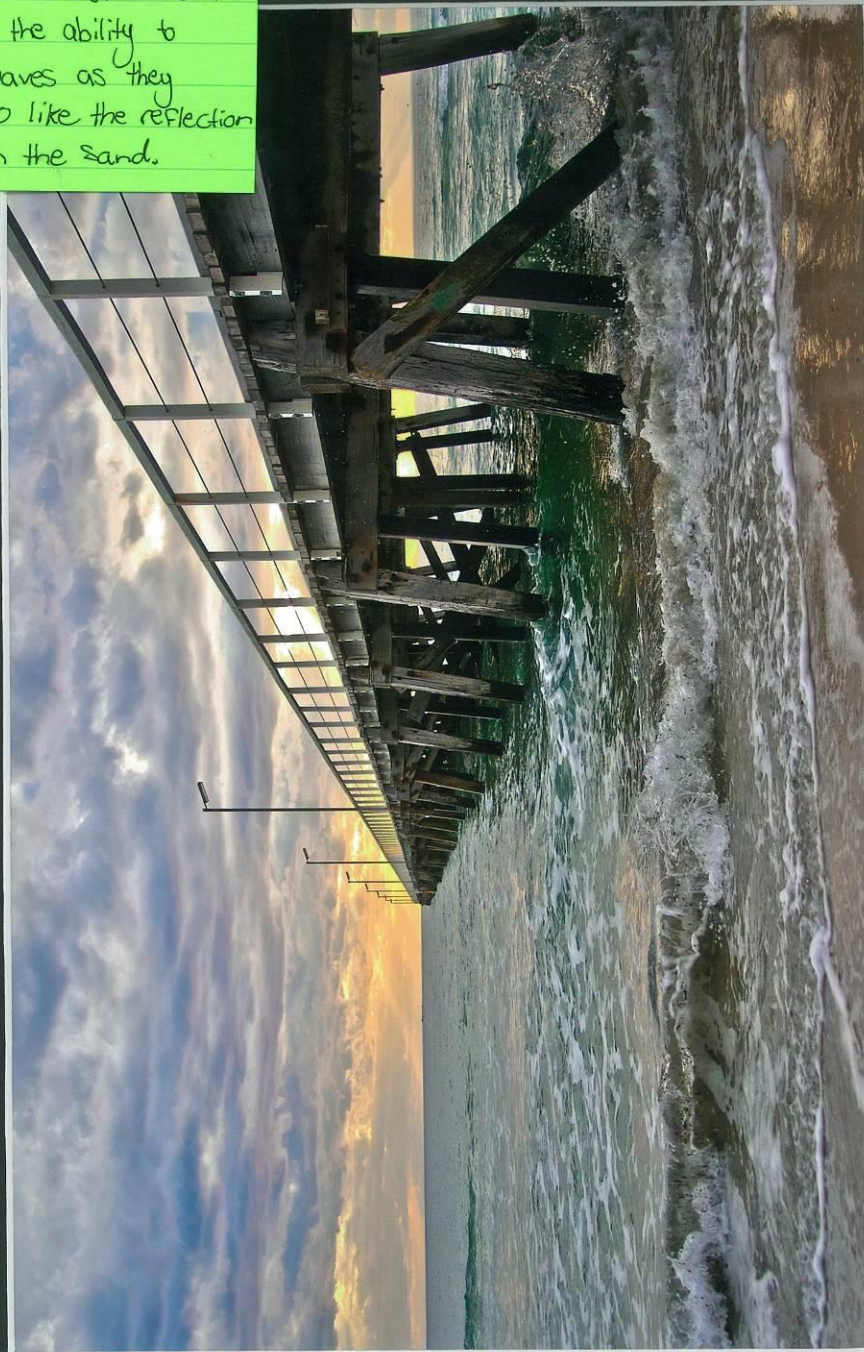
These are my digital test Strips. They helped me determine where to make adjustments to get the best looking image. When printing a photograph It always appears lighter on the screen compared to the actual printed photo. Instead of printing a full size image over and over again until the colours are right we make these test strips.

process:

- ① Crop a rectangle piece of your photo and paste it on a new layer
- ② Print the test strip using the settings you will use for your final print
- ③ Assess the test strip, checking colour, brightness, sharpness and any other Settings you might need to adjust.
- ④ Repeat these steps until you have a test strip you are happy with.
- ⑤ When you have a test strip you are happy with, use the Page Setup function in the file menu to set the paper size and orientation to match the output size of the final print.
- ⑥ print the image.

Final Image

I like the vibrancy of the colours in this image. The Sun shining through the clouds gives the image a nice warm feel. The use of a fast shutter speed gave me the ability to capture the waves as they crashed. I also like the reflection of the sun on the sand.



Practical Application

Refined and integrated development and application of a variety of practical skills, techniques, and processes.

Evaluation

Insightful critical reflection on personal creative arts ideas, processes, and products.

Basic Toning

Sepia toning is used by photographers to create a warmer print tone.

- process:
- ① Thoroughly wash the completed black and white print
 - ② Soak the print in bleach until the silver image is completely converted from its metallic state.
 - ③ Rinse the print in water to remove all of the bleach
 - ④ Tone the print in the Sepia solution
 - ⑤ Wash thoroughly and dry the print

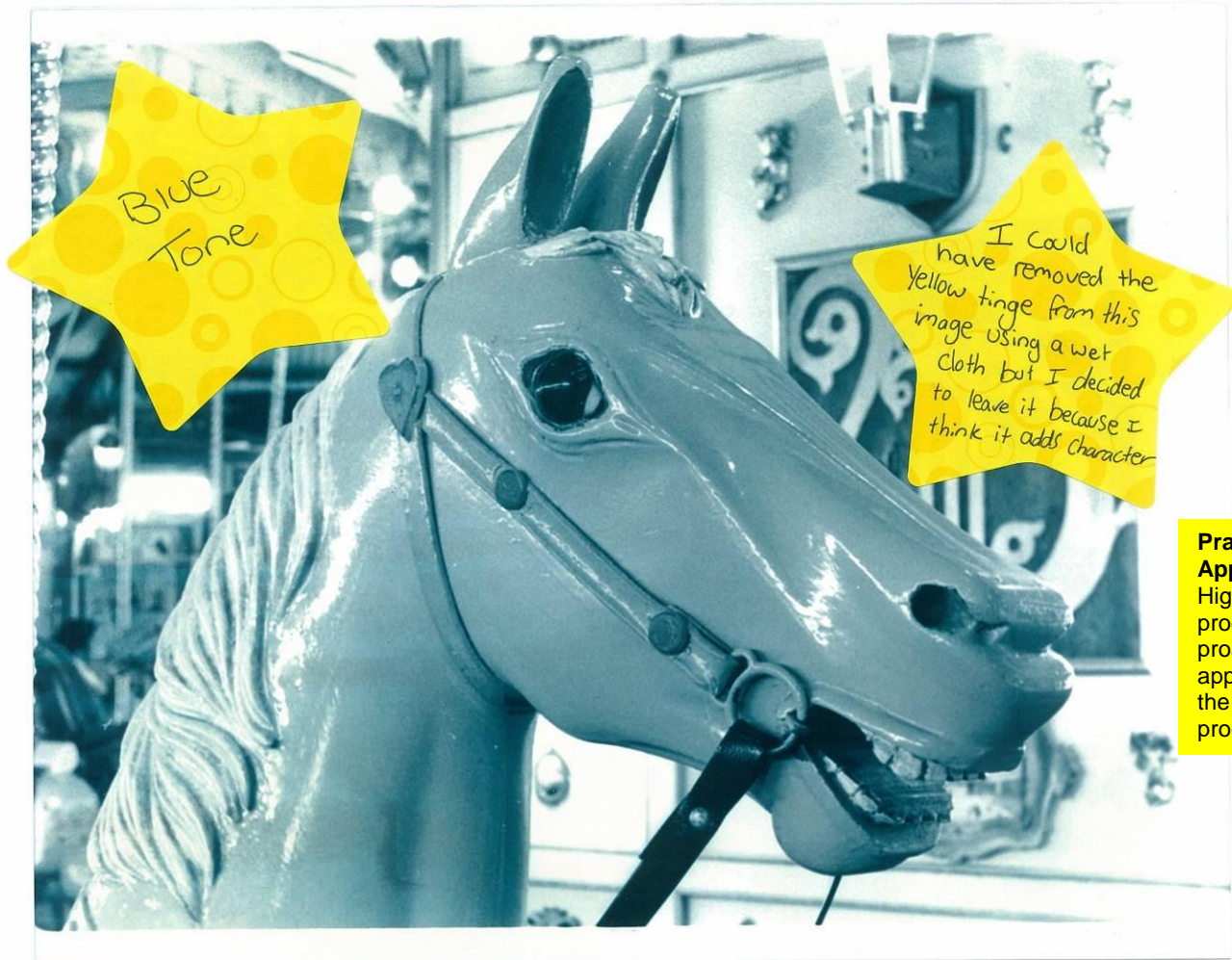
Practical Application
Creative and clear expression and communication of ideas and opinions relevant to the program focus.

Blue toning is applied to black and white images to give them a cool feel. Blue toning uses iron to replace the original silver of the print.

- process:
- ① Put the wet black and white into the blue tone
 - ② When the print is as blue as you want it, move it to the stop bath
 - ③ Wash and dry the print.

Practical Application
Highly productive and proactive approaches to the creative arts process.



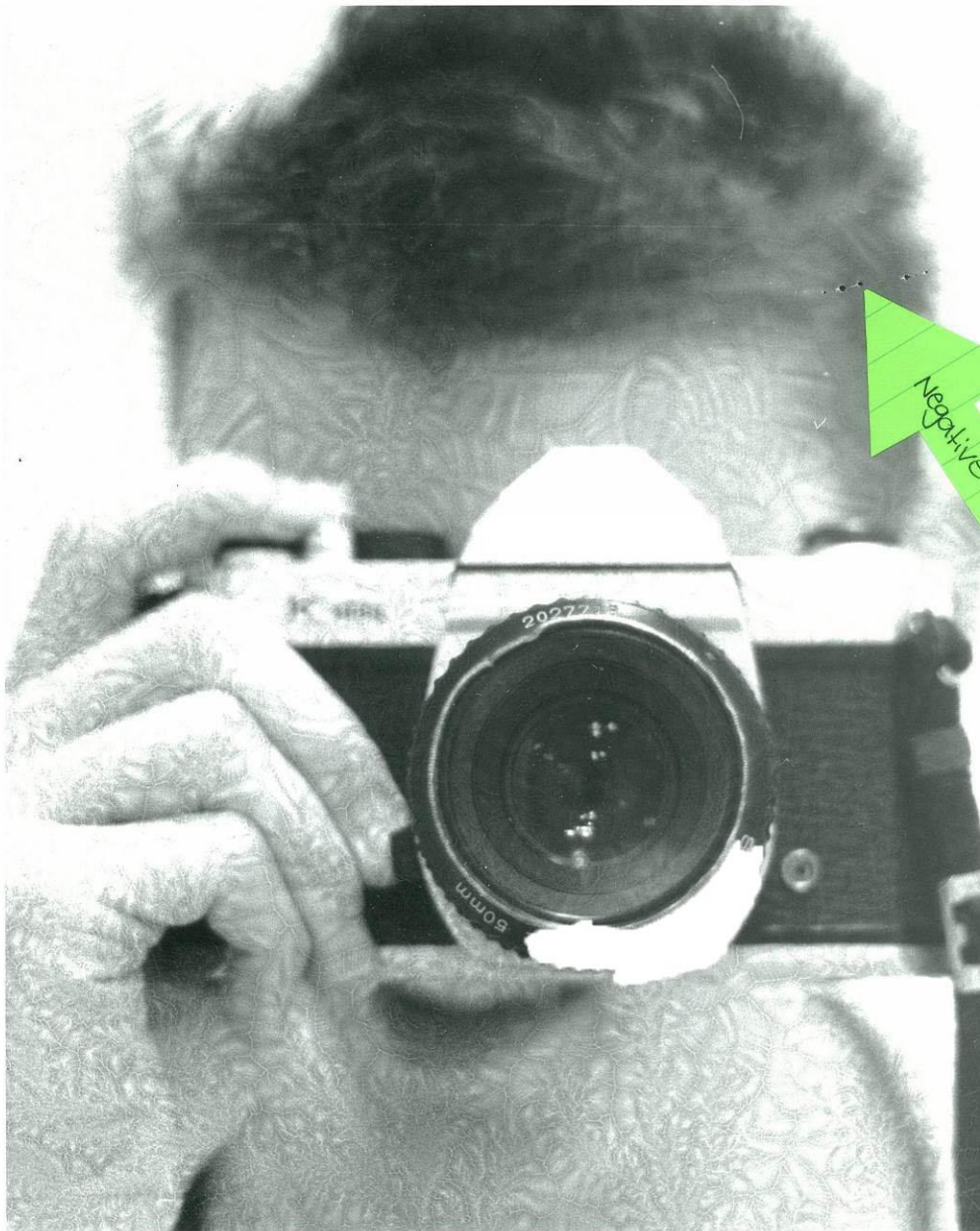


Practical Application
Highly productive and proactive approaches to the creative arts process.



Evaluation
Insightful critical reflection on personal creative arts ideas, processes, and products.

Reticulation



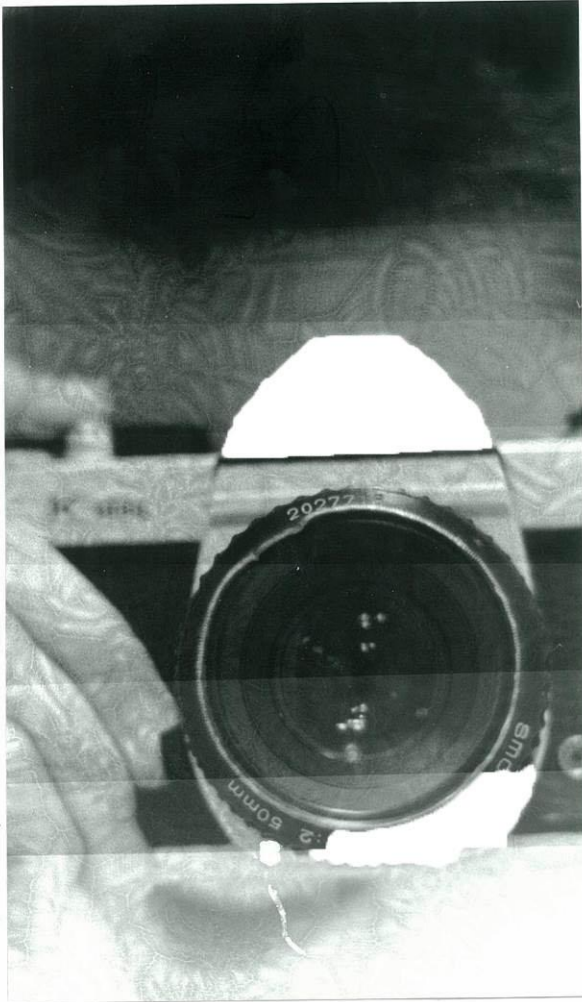
Practical Application

Highly productive and proactive approaches to the creative arts process.

Evaluation

Insightful critical reflection on personal creative arts ideas, processes, and products.

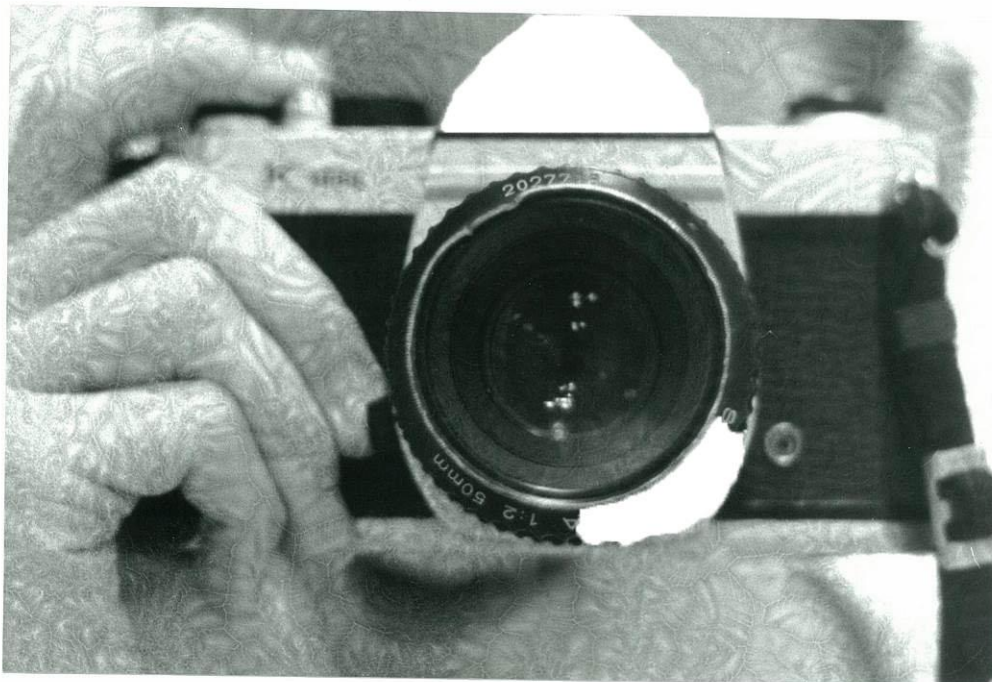
This is a really good example of a reticulated image. The long film processing process was well worth it. I really like all the detail and 'cracks' in this photo. These cracks are the result of the emulsion layer of the film and the silver grains within it clumping together to form a regular pattern. I think it would have been beneficial if I used a filter when processing this image to increase the contrast and intensify the blacks.



When temperature varies widely from solution to solution during film processing, the film grain can become large and coarse. When the temperature variation is extreme, it can cause reticulation - a noticeable cracking in the emulsion. The look reticulation provides can be very effective with certain images.

process:

- ① Load your exposed film onto reels in darkness and drop the reels into the processing tank
- ② Rinse the film in an acetic acid stop bath for 1 minute at 60-66 degrees.
- ③ pour out the water from the tank and pour in the film developer at normal temperature
- ④ pour out the developer from the tank and pour in the cold stop bath. 40° or colder
- ⑤ Continue the standard film processing steps
- ⑥ Wash the film for 30 minutes
- ⑦ Freeze the film when it is partially dry.



Evaluation
Insightful critical reflection on personal creative arts ideas, processes, and products.

Practical Application
Highly productive and proactive approaches to the creative arts process.

Additional Comments

This work displays evidence of the specific features in the 'A' band.

This work displays 12 sets of evidence, each exploring a different photographic technique, with 'Practical Application', 'Investigation and Analysis', and 'Evaluation'.

It is evident in this work that the creative arts process – investigation, development, production and reflection – has occurred within this component of the course.

Performance Standards for Stage 2 Creative Arts

	Knowledge and Understanding	Practical Application	Investigation and Analysis	Evaluation
A	<p>In-depth knowledge and understanding of creative arts concepts specific to relevant creative arts discipline(s).</p> <p>Astute and accurate understanding and use of language specific to relevant creative arts discipline(s).</p> <p>In-depth knowledge of a variety of creative arts media, materials, techniques, processes, and technologies, and understanding of their possible applications.</p>	<p>Creative and clear expression and communication of ideas and opinions relevant to the program focus.</p> <p>Discerning use of the creative arts process in the development and presentation of well-refined creative arts product(s).</p> <p>Highly productive and proactive approaches to the creative arts process.</p> <p>Refined and integrated development and application of a variety of practical skills, techniques, and processes.</p>	<p>Purposeful investigation, selection, critical analysis, and full acknowledgment of a variety of appropriate sources and ideas.</p> <p>Astute and detailed exploration and analysis of appropriate creative arts media, materials, techniques, processes, and technologies within and/or across creative arts forms.</p>	<p>Insightful and knowledgeable evaluation of creative arts products, with reference to practitioners' intentions, processes, outcomes, and contexts.</p> <p>Insightful critical reflection on personal creative arts ideas, processes, and products.</p> <p>Discerning and well-informed appraisal of others' creative arts ideas and processes, and astute expression of aesthetic opinions.</p>
B	<p>Some depth of knowledge and understanding of creative arts concepts specific to relevant creative arts discipline(s).</p> <p>Mostly accurate understanding and use of language specific to relevant creative arts discipline(s).</p> <p>Some depth of knowledge of different creative arts media, materials, techniques, processes, and technologies, and understanding of their possible applications.</p>	<p>Thoughtful and mostly clear expression and communication of ideas and opinions relevant to the program focus.</p> <p>Well-considered use of the creative arts process in the development and presentation of polished creative arts product(s).</p> <p>Productive and proactive approaches to the creative arts process.</p> <p>Generally integrated development and application, with some refinement, of different practical skills, techniques, and processes.</p>	<p>Well-considered investigation, selection, analysis, and acknowledgment of sources and ideas.</p> <p>Some depth of exploration and analysis of appropriate creative arts media, materials, techniques, processes, and technologies within and/or across creative arts forms.</p>	<p>Well-considered and well-informed evaluation of creative arts products, with reference to practitioners' intentions, processes, outcomes, and contexts.</p> <p>Well-considered reflection on personal creative arts ideas, processes, and products.</p> <p>Thoughtful and well-informed appraisal of others' creative arts ideas and processes, and well-informed explanations of aesthetic opinions.</p>
C	<p>Appropriate knowledge and understanding of key creative arts concepts specific to relevant creative arts discipline(s).</p> <p>Appropriate understanding and use of language specific to creative arts discipline(s).</p> <p>Knowledge of key creative arts media, materials, techniques, processes, and technologies, and understanding of their possible applications.</p>	<p>Generally considered and clear expression and communication of ideas and opinions relevant to the program focus.</p> <p>Competent use of the creative arts process in the development and presentation of appropriate creative arts product(s).</p> <p>Generally productive approaches to the creative arts process.</p> <p>Competent development and application, with some refinement, of key practical skills, techniques, and processes.</p>	<p>Considered investigation, selection, analysis, and acknowledgment of sources and ideas.</p> <p>Competent exploration and some analysis of appropriate creative arts media, materials, techniques, processes, and technologies within and/or across creative arts forms.</p>	<p>Considered and informed evaluation of creative arts products, with reference to practitioners' intentions, processes, outcomes, and contexts.</p> <p>Considered reflection on personal creative arts ideas, processes, and products.</p> <p>Considered and informed appraisal of others' creative arts ideas and processes, with reference to some aesthetic opinions.</p>
D	<p>Basic knowledge of some creative arts concepts and recognition of their relevance to a creative arts discipline.</p> <p>Awareness and use, in context, of some terms relevant to creative arts discipline(s).</p> <p>Recognition of some creative arts media, materials, techniques, processes, and technologies, and awareness of one or more possible applications.</p>	<p>Basic expression of an idea or opinion relevant to the program focus.</p> <p>Some experimentation with or exploration of aspects of a creative arts process in the development or presentation of a basic creative arts product(s).</p> <p>Some basic participation in aspects of the creative arts process.</p> <p>Some development and application of a practical skill, technique, or process.</p>	<p>Identification and some use of sources or ideas.</p> <p>Some basic exploration and description of creative arts media, materials, techniques, processes, or technologies within or across creative arts forms.</p>	<p>Description and some consideration of creative arts products, with occasional reference to practitioners' intentions, processes, outcomes, and/or contexts.</p> <p>Superficial consideration of personal creative arts ideas, processes, or products.</p> <p>Some reference to aesthetic qualities in others' creative arts ideas or processes.</p>
E	<p>Some recognition of one or more selected arts concepts.</p> <p>Limited awareness or use of terms that may be relevant to the creative arts.</p> <p>Emerging awareness of creative arts media, materials, techniques, processes, or technologies.</p>	<p>Attempted expression of an idea or opinion that may be relevant to the program focus.</p> <p>Attempted use of one or more aspects of the creative process in the limited development or presentation of a creative arts product.</p> <p>Attempted participation in aspects of the creative arts process.</p> <p>Attempted development and application of a practical skill, technique, or process.</p>	<p>Identification of a creative arts source or idea.</p> <p>Some attempt to describe creative arts media, materials, techniques, processes, or technologies in a creative arts form.</p>	<p>Attempted description of a creative arts work, with limited reference to the practitioner's processes or context.</p> <p>Attempted description of a personal creative arts idea, process, or product.</p> <p>Limited awareness of aesthetic qualities in others' creative arts ideas or processes.</p>