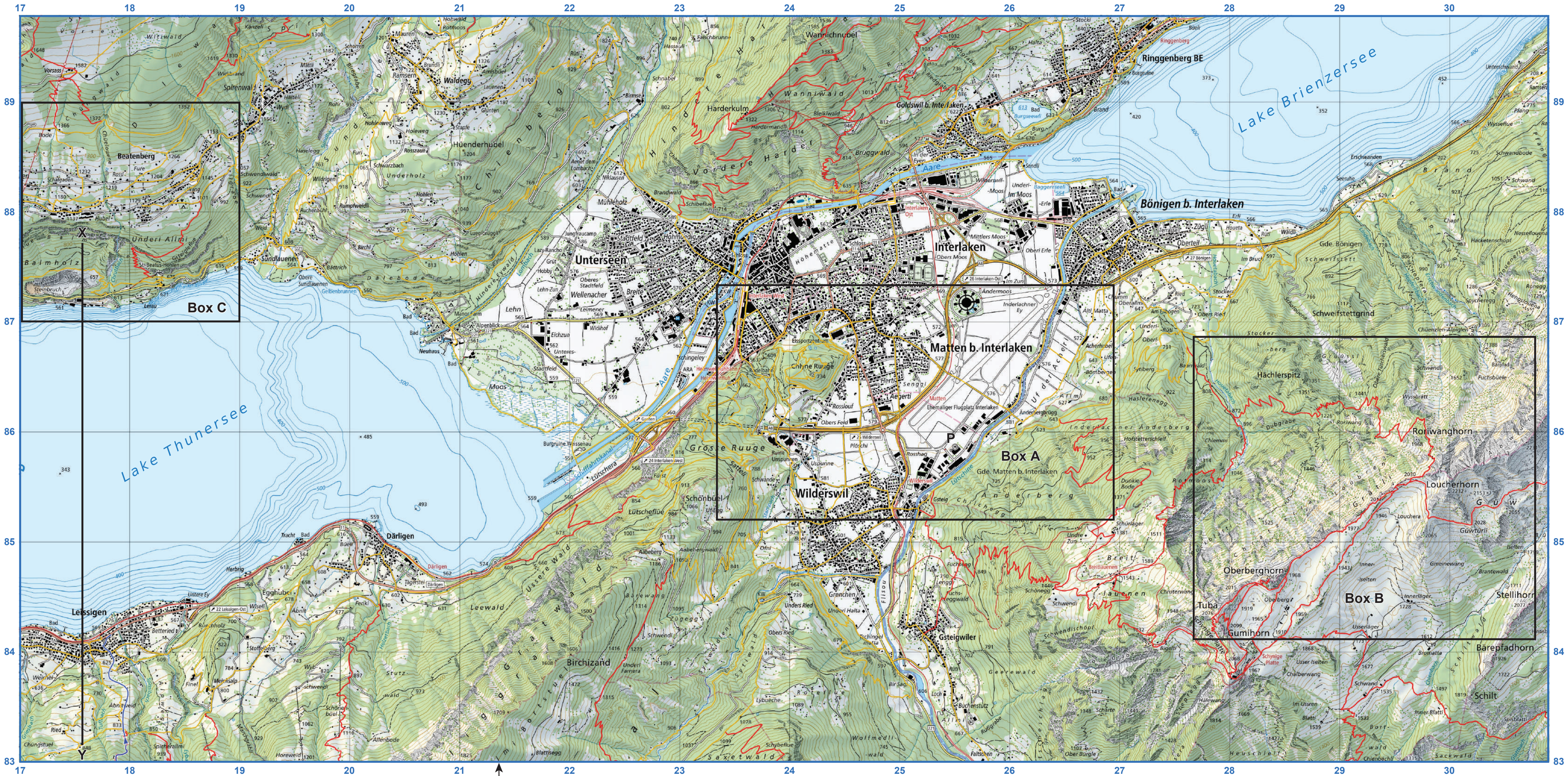


Refer to the INTERLAKEN topographic map, where appropriate, when answering Questions 1 to 7.

INTERLAKEN, SWITZERLAND, Scale 1:25 000



N

Scale 1:25 000

0 0.25 0.5 1 1.5 2 Km

CONTOUR INTERVAL 20 METRES

Roads, tracks

Expressway, under construction

10 m Road (> 10 m) hard surface, unsurfaced

8 m Road (> 8 m) hard surface, unsurfaced

6 m Road (> 6 m) hard surface, unsurfaced

4 m Road (> 4 m) hard surface, unsurfaced

1 m Track (< 2 m), footbridge

Track fragment

Barrier, traffic ban

Trunk road

Main connecting road

Slip road, motorway interchange

Gallery/covered bridge

Tunnel

Boundaries

National border disputed

Municipal boundary

Public transport

Railway station

Stop, on road

Standard gauge railway single-track, under construction

Narrow gauge railway multiple tracks, under construction

Narrow gauge railway single-track/light railway, under construction

Siding

Tunnel

Aerial cableway with pylons

Goods lift/out-of-service cableway with pylons

Landing stage

Hiking trails

Hiking trail

Mountain trail

Alpine trail

Ski routes

Ski route

Suggested direction

Buildings and constructions

Building

Open building/greenhouse/flying roof

Church tower/sacred tower

Chapel

Tower

Observation tower

Tall chimney

Triangulation pyramid

Monument

Dry wall

Avalanche barricade

Sports ground

Running track

High-voltage power line

Airfield, hard-surface runway

Pond, swimming pool

Water supply facility (reservoir, tank, pumping station)

Water tower

Sites

Airfield

Heliport

Campsite

Golf course

Allotment

Cemetery

Leisure facility/park

Car park/traffic zone

Hospital/clinic

Orchard

Electrical substation

Waste disposal site

Land cover

Contour lines: earth, scree, lake/glacier

NM10: 10 m (Lake: 20 m)

NM25: 10 m (Jura Mtns., Plateau), 20 m (Alps)

NM50: 20 m

Water

Spring, waterfall

Watercourses (stream, river)

Landing stage

Lake, lake level, maximum depth

Wetland (marsh, reeds, alluvial zone)

River weirs

Dry gully

Source: Topographic map extract adapted from © swisstopo, public.geo.admin.ch, map.geo.admin.ch_2025-05-16T05-57-53Z, map.geo.admin.ch_2025-05-16T05-58-42Z, map.geo.admin.ch_2025-05-16T05-59-09Z. Locator maps adapted from © Flavijus | Dreamstime.com and https://d-maps.com/carte.php?num_car=24780&lang=en