

Agenda

1. Welcome
2. Years of success
3. What's new
 - a) IEA conference
 - b) modified eligibility
 - c) PLATO
4. Moving forward
 - a) subject renewal and new subjects
 - b) online submission
 - c) online marking and moderation
 - d) electronic exams
 - e) special provisions
 - f) SACE review
5. News flash
 - a) calculations
 - b) marking tools
 - c) ask SACE
 - d) data packs
 - e) design and technology gallery

Booklet Contents

What's new	
IEA conference.....	3
modified subjects eligibility.....	4
Moving forward	
subject renewal – subjects for teaching and subject implementation in 2019	5
draft subject renewal schedule 2018 – 2022	6
subject for online submission.....	7
accepted file names.....	9
codes for subjects.....	9
assessment types	9
list SACE classes screen.....	10
combined assessment group – same school.....	11
combined assessment group – different schools.....	12
News flash	
marketing tools.....	13
new videos.....	13
notes	14

What's new

IEA Conference



IEA CONFERENCE 2019

EDUCATING FOR THE FUTURE

Reframing rigour, validity and fairness for student success in the 21st century

MONDAY 1 APRIL
8:30AM to 4:00PM

ADELAIDE CONVENTION CENTRE

**EARLY BIRD BOOK
BY 28 FEBRUARY**

\$190 | \$230

BOOK NOW
WWW.IEA.SA.EDU.AU

SPEAKERS



ANDREAS SCHLEICHER

Visiting Director of Education and Skills, OECD, France

Andreas is Director for Education and Skills, and Special Advisor on Education Policy to the Secretary-General at the Organisation for Economic Co-operation and Development (OECD). He initiated the Programme for International Student Assessment (PISA), overseeing this and other instruments, used by researchers and educators across the world, to innovate and transform educational policies and practices.



ASSOCIATE PROFESSOR SANDRA MILLIGAN

Director, Assessment Research Centre, University of Melbourne

Sandra is the Director of the Assessment Research Centre at the University of Melbourne, leading a research team to improve assessment, reporting and credentialing through an integrated program of research, development and teaching. She focuses on hard-to-access learning, with her most recent research examining opportunities to use 'big data' to support assessment of higher-order learning skills.



PROFESSOR MARTIN WESTWELL

Chief Executive, SACE Board of South Australia

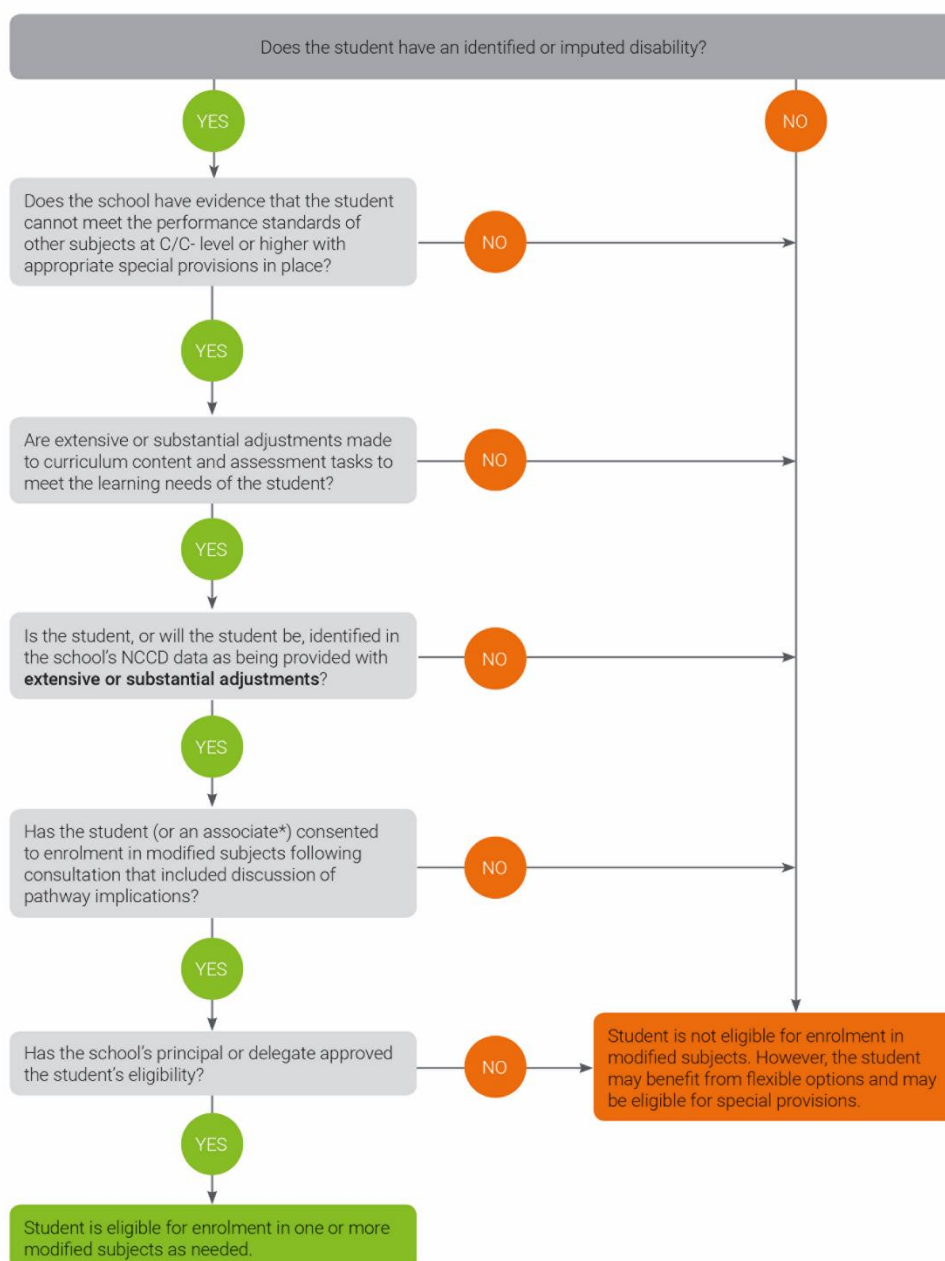
Martin is the Chief Executive of the SACE Board of South Australia. Building on his research career at the Universities of Cambridge and Oxford, Martin has worked extensively with global education systems and organisations to inform policy, practice and innovation. In 2018 he was awarded the Australian Council of Educational Leaders' Gold Medal for his outstanding contribution to the study and practice of educational administration and leadership.

Modified Subjects eligibility

Support materials available for Modified SACE:

- Information Sheet 17
(Coordinating the SACE > Administration > Information sheets)
- Frequently asked questions
(Teaching the SACE > Subjects > Modified Subjects > FAQs)
- Modified Eligibility 2019 - Form for school use only
(Teaching the SACE > Subjects > Modified Subjects > Stage 2 > Forms)
- Modified Subjects Subject Outline (for teaching in 2019)
(Teaching the SACE > Subjects > Modified Subjects > Overview)
- Modified subjects eligibility decision making process – flowchart

Modified Subjects Eligibility Decision Making Process



*Associate – e.g. parent/carer

Moving forward

Subject Renewal

Subjects for teaching in 2019	Subject implementation in 2019
<p>The following redeveloped subjects will be taught for the first time in 2019:</p> <p>Stage 1</p> <ul style="list-style-type: none">AccountingBusiness InnovationPhysical EducationScientific Studies <p>Stage 2</p> <ul style="list-style-type: none">Digital TechnologiesMusic ExplorationsMusic Performance – EnsembleMusic Performance – SoloMusic StudiesScientific Studies	<p>There will be implementation workshops during 2019 for the following redeveloped subjects that will be taught for the first time in 2020:</p> <p>Stage 1</p> <ul style="list-style-type: none">Australian LanguagesDesign Technology and EngineeringEconomics <p>Stage 2</p> <ul style="list-style-type: none">AccountingAustralian LanguagesBusiness InnovationDesign Technology and EngineeringEconomicsPhysical Education <p>Repeats of the 2018 implementation workshops for subjects being taught for the first time in 2019 have also been made available to teachers.</p>

Draft Subject Renewal Schedule 2018 – 2022

2018–2019	2019–2020	2020–2021	2021–2022
Accounting	Australian and International Politics	Child Studies	Community Studies
Australian Languages	Continuers languages – based on framework (Chinese, French, German, Indonesian, Italian, Japanese, Modern Greek, Spanish, Vietnamese)	Chinese (Background)	Modified Subjects
Business and Enterprise	Research Project A	Creative Arts	Religion Studies
Dance	Research Project B	Cross-disciplinary Studies	Visual Arts
Design and Technology	Psychology	Food and Hospitality	Women's Studies
Drama	Nutrition	Information Processing and Publishing	Language and Culture
Economics	Legal Studies	Tourism	Philosophy
Health	Research Practices	Media Studies	Workplace Practices
Languages framework		Society and Culture	
Outdoor Education		Vietnamese (Background)	

Subjects for online submission

Our plan is to have all SACE subjects available for online submission by 2020.

Stage 2 subjects	Online submission	
	Marking <i>(externally assessed materials)</i>	Moderation <i>(school assessed materials)</i>
Aboriginal Studies	✓	✓
Agricultural Production	✓	✓
Agricultural Systems	✓	✓
Australian Languages	✓	✓
Ancient Studies	✓	✓
Australian and International Politics	✗	✓
Business and Enterprise	✓	✓
Child Studies	✓	✓
Community Studies	✓	✗
Cross-disciplinary Studies	✓	✓
Dance	✗	✓
Design and Technology - Communication Products	✓	✗
Design and Technology - Material Products	✓	✗
Design and Technology - Systems and Control Products	✓	✗
Digital Technologies	✓	✓
Drama	✗	✓
Earth and Environmental Science	✓	✓
English	✓	✓
English as an Additional Language	✗	✓
English Literary Studies	✓	✓
Essential English	✓	✓
Food and Hospitality	✓	✓
Health	✓	✓

Indonesian (continuers)	X	✓
Information Processing and Publishing	✓	✓
Integrated Learning	✓	✓
Language and Culture	✓	✓
Legal Studies	X	✓
Media Studies	✓	✓
Modern History	X	✓
Music Explorations	✓	✓
Music Performance – Ensemble	✓	✓
Music Performance – Solo	✓	✓
Music Studies	X	✓
Nutrition (10-credit)	✓	✓
Nutrition (20-credit)	X	✓
Outdoor Education	✓	✓
Philosophy	✓	✓
Psychology (10-credit)	✓	✓
Psychology (20-credit)	X	✓
Religion Studies	✓	✓
Research Project	✓	✓
Scientific Studies	✓	✓
Society and Culture	✓	✓
Tourism	X	✓
Women's Studies	✓	✓
Workplace Practices	✓	✓

Once assessment materials have been submitted to [Schools Online](#), externally assessed materials will be [marked online](#), and externally assessed materials will be [moderated online](#).

Our plan is to have all SACE subjects available for online submission by 2020.

Accepted file names

When [submitting assessment materials online](#), teachers need to use accepted file names and [accepted file formats](#). This allows the system to automatically identify assessments and match them with student records. Files that are not named correctly, or have an incompatible format, or contain a virus will be rejected. If files are rejected, teachers will need to check the file name and format then upload again.

Automatic identification for a faster workflow

Teachers are able to upload multiple files at once, or one at a time. Once uploaded, the system automatically matches correctly named files with student records. This means a faster workflow and less mistakes.

Tip: We strongly encourage teachers to ask students to save their files with an accepted file name.

Example of an accepted file name

For the system to identify an assessment, teachers need to include the student's SACE registration number, [subject code and assessment type code](#) in the file name. Free text is mandatory and should be included at the end of the file name to further identify the assessment, e.g. "*Health diabetes investigation*" or "*Task 3*".

Note: A dash (-) separates each number or code in the file name.

Student SACE registration number (7 characters)	Subject code (6 characters)	Assessment type code (3 characters)	Free text (100 character limit, can include spaces)	Accepted file name
123456R	2XXX20	ATX	free text	123456R-2XXX20-ATX-free text

Codes for subjects

'List of subject and codes' can be downloaded from 'Administration' mini site. (Coordinating the SACE > Administration)

The screenshot shows the 'Administration' page of the 'Coordinating the SACE' website. A red arrow points from a text box labeled 'List of subjects and codes' to a link on the page that says 'List of subjects and codes [PDF 336KB]'. The page also lists other resources like 'Key dates' and 'Information sheets'.

Assessment Types

Please refer to *subject outlines* for Assessment Types. Below is an example for Health.

Stage 2 subject	Subject code	Assessment type	Assessment type code
Health	2HEH10 – (10 credits) 2HEH20 – (20 credits)	1: Group Investigation and Presentation	AT1
		2: Issues Analysis	AT2
		3: Practical Activity	AT3
		4: Investigation	AT4

List SACE Classes Screen

> Home > SACE Classes > SACE Class Selection

SACE Class Selection

SACE Stage: 2 Year: 2018

Results Due: [Dropdown] Teaching School: Classes Taught Here Classes Taught Elsewhere

SACE Code: [Text Box] Linked Assessment Groups Only:

Reset Search Options Search

Class Code	Subject Code	Subject Name	Class Number	Var	Semester	Results Due	Teacher	Assessment Group	Student Count	Linked Assess Grp
<Not Set>	2CCA20	Communication Products I	1		1	D	Mr b b	1	0	N
<Not Set>	2CSD20	Child Studies	1		1	D	Mrs A A	1	0	N
<Not Set>	2ELS20	English Literary Studies	1		1	D	MR F Ree	1	0	N
<Not Set>	2ESH20	English	1		1	D	G G reen	1	0	N
<Not Set>	2ESH20	English	2		1	D	Ms B ox	2	0	N
<Not Set>	2ESH20	English	3		1	D	Ms T Est	3	0	N
<Not Set>	2ESH20	English	22		1	D	Mr T ESTER	22	0	N
<Not Set>	2ETE20	Essential English	1		1	D	Mr C Smith	1	0	Y(Same School)
<Not Set>	2ETE20	Essential English	2		1	D	Mr M Maroon	1	0	Y(Same School)
<Not Set>	2FOH20	Food and Hospitality	1		1	D	Mrs S school	1	0	N
<Not Set>	2FRB20	French (beginners)	1		1	D	MR A Unknown	1	0	N
<Not Set>	2FRC20	French (continuers)	1		1	D	MR A Unknown	1	0	Y(Other School)
<Not Set>	2HAY20	Health, Recreation, and the Community	1		1	D	Ms T WIGG	1	0	N
<Not Set>	2IBY20	Interdisciplinary Learning and the Community	1		1	D	Mr I Ron	1	0	N
<Not Set>	2IBY20	Interdisciplinary Learning and the Community	2		1	D	Mr P Ull	2	0	N
<Not Set>	2IFT20	Information Technology	1		1	D	Mr U nknown	1	0	N
<Not Set>	2JAC20	Japanese (continuers)	1		1	D	C C hris	1	0	N
<Not Set>	2LEG20	Legal Studies	1		1	D	Mr B OB	1	0	N
<Not Set>	2MBL10	Ensemble Performance	1		1	D	Mrs N ext	1	0	N
<Not Set>	2MEM20	Essential Mathematics	1		1	D	Ms EX ample	1	2	Y(Same School)

Page 1 of 4 66 records

Contact | Disclaimer | Privacy | Terms and Conditions | Copyright

The 'List SACE Classes' screen is in subject code and class number order

Hints

Choose a class from the list

1. This page displays the list of classes found by your search.

2. Choose the class you want and click its **Class Code** to display a list of the students enrolled in this class.

HINT: Click the subject code to display the Subject Information screen.

These 2 classes have been linked within the same school

This class is linked to another school's class

Combined Assessment Group – Same School

SACE Website | Chris Smith (005) | Logout

South Australian Certificate of Education
Tools Online

> Home > SACE Classes > SACE Class Selection > SACE Class Summary

SACE Class Summary

Information

- Cutoff for the subject is 2018-12-08 23:59:59.0

Class Code	Teacher	Subject	Class Number	Semester	Results Due	Assessment Group	Assessment School
<Not Set>	Ms S UCESS	2MEM20 Essential Mathematics	3	1	D	1	005-School A

Delete Selected | Withdraw Selected

Select	Student Code	Student Name	Registration	Exam Centre	Status	Grade	Details
<input type="checkbox"/>	130067	WAYE, N.O	552618L	005-School A	E		
<input type="checkbox"/>	110169	ZOO, S	263548J	005-School A	E		
<input type="checkbox"/>	140109	Bow, Rain	342204F	005-School A	E		Class No: 1, Ms EX ample (005)
<input type="checkbox"/>	130188	POWER, Max	355344R	005-School A	E		Class No: 1, Ms EX ample (005)
<input type="checkbox"/>	110189	Green, Trees R	569178X	005-School A	E		Class No: 2, Mr SP eedy (005)
<input type="checkbox"/>	140140	WHILE, Wait A	275216F	005-School A	E		Class No: 2, Mr SP eedy (005)

Number of Students: 6
Select All | Clear All

Delete Selected | Withdraw Selected

Edit SACE Class | Add Students to Class

Hints

Editing class and student details for this class

- The class student class
- You can view details on the enrolment by the book icon along the enrolment.
- You can also choose to edit **teacher, class** information.
- You can view details on the enrolment by the book icon along the enrolment.
- For a subject that required eligibility you can view the **Eligibility Status**.
- If there are no

The class selected from 'List SACE Classes' screen will appear at the top and can be edited

Other classes in the assessment group appear here in class number order and cannot be edited from this screen.

Combined Assessment Group – Different Schools

SACE Website Chris Smith (005) Logout

South Australian Certificate of Education **Schools Online**

> Home > SACE Classes > SACE Class Selection > SACE Class Summary

Students

SACE Classes

- List SACE Classes
- Create SACE Class
- Proposed Status Change
- Update SACE Class
- Teacher Information
- SACE Class Reports
- School Result Sheets
- Teacher Result Sheets
- Teacher Classes

VET Enrolments

Reports

Data Exchange

School

Curriculum

Moderation

Panels

Investigations

Marking

Admin

Server Admin

SACE Class Summary

Information

- Cutoff for the subject is 2018-12-06 23:59:59.0

Class Code	Teacher	Subject	Class Number	Semester	Results Due	Assessment Group	Assessment S
<Not Set>	MR C Teacher	2SPC20 Spanish (continuers)	1	1	D	1	005-School

Delete Selected Withdraw Selected

Select	Student Code	Student Name	Registration	Exam Centre	Status	Grade	Details
<input type="checkbox"/>	130177	CITIZEN, A	526173W	005-School A	E		
<input type="checkbox"/>	110136	Test, Alan	287927R	005-School A	E		
	150288	BUGG, D	902597W	001-School B	E		Class No: 1, Mr B Teacher (001)
	140025	Example, An	926140G	001-School B	E		Class No: 1, Mr B Teacher (001)
	170097	PUPIL, Ian	322547T	335-School Z	E		Class No: 1, Mr A Teacher (335)
	170075	Step, N	604866J	335-School Z	E		Class No: 1, Mr A Teacher (335)

Number of Students: 6
Select All | Clear All

Delete Selected Withdraw Selected

Edit SACE Class | Add Students to Class

Hints

Editing class and student

2. Use this page to **add**, **delete** or **withdraw** students to/from the class. Students with **proposed** enrolments can have their status upgraded to **enrolled**.
3. You can also choose to edit **teacher**, **class** information.
4. You can view details on the enrolment by the book icon along the enrolment.
5. For a subject that required eligibility you can view the **Eligibility Status**.
6. If there are no

The subject cut-off date appears on each class summary screen

School B and School Z students appear under the selected class and cannot be edited

The exam centre is a new column and cannot be edited

News flash

Your marketing toolkit

The SACE marketing toolkit is designed to assist you in explaining the SACE to parents and students. Check out the following resources on our website.

Videos

- How to build 200 credits
- Helping you to achieve your SACE: Special Provisions
- Making sure it's fair: Stage 2 Marking
- Making sure it's fair: Stage 2 Moderation
- The value of the SACE

Brochures and Posters


- Building your credits poster
- Welcome to the SACE powerpoint presentation
- Welcome to the SACE brochures (2 pages or 8 pages)
- Capability posters

We hope these resources prove to be useful and we welcome any feedback on what you would like to see added to the toolkit. Email our Marketing Coordinator April Hill at april.hill@sa.gov.au with any suggestions you might have.

www.sace.edu.au/coordinating/marketing-toolkit



New videos



[Special provisions](#) [Stage 2 Marking](#) [Stage 2 Moderation](#)

Notes

SACE Review

IEA conference

Modified subjects

PLATO

Subject renewal

Online submission of materials

Online marking and moderation

Electronic examinations

Special provisions - SACE website links:

- [Coordinating the SACE > Supporting students > Special Provisions > Forms and information sheets](#)
- [Coordinating the SACE > Supporting students > Special Provisions > Models of good practice](#)

News flash