

## SACE 2018 Electronic Examination

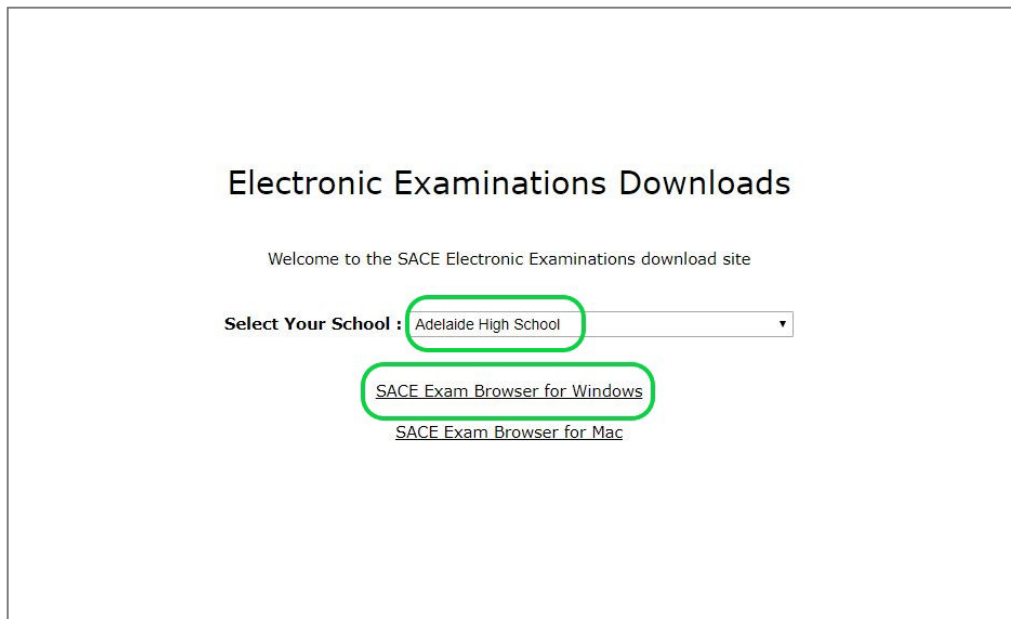
### SACE Exam Browser installation instruction sheet for IT managers and students

#### Instructions

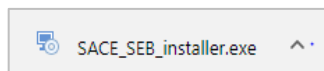
#### SACE Exam Browser Installation for Windows

**Please Note:** These instructions assume the SACE Exam Browser for Windows is being installed using the Google Chrome browser, if you are installing this software using another browser the download options and installation screens will differ from these instructions. For Mac devices refer to SACE Exam Browser for Mac installation instruction sheet.

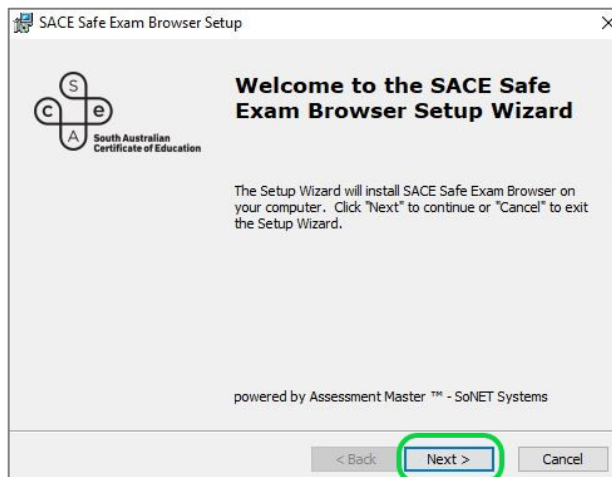
1. Click [here](#) to download the SACE Exam Browser.
2. The 'Select Your School' drop down box will appear – select your school.
3. The option to select SACE Exam Browser for Windows/Mac will appear - select SACE Exam Browser for Windows.



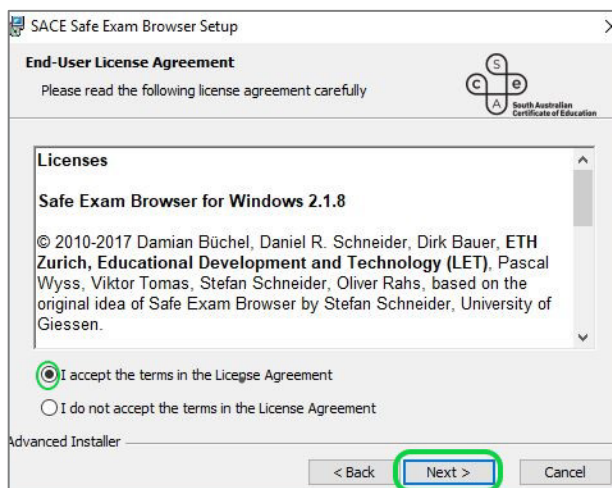
4. An installation message will pop up – click on the pop up to install.



5. The 'Welcome to the SACE Exam Browser Setup Wizard' window will appear and click 'Next>'



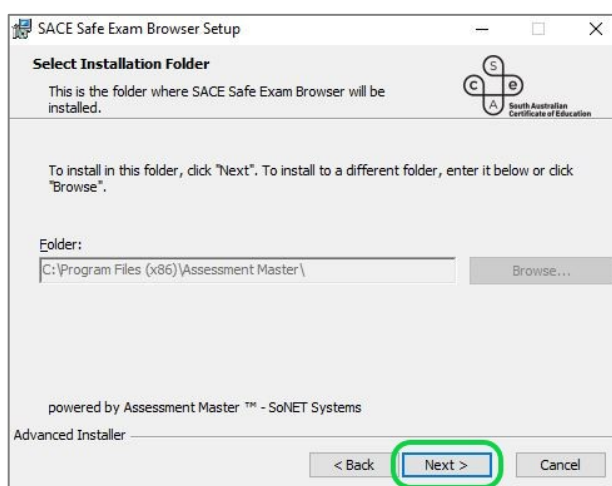
6. At the 'License Agreement' window select the 'I accept' button and then click 'Next>'.



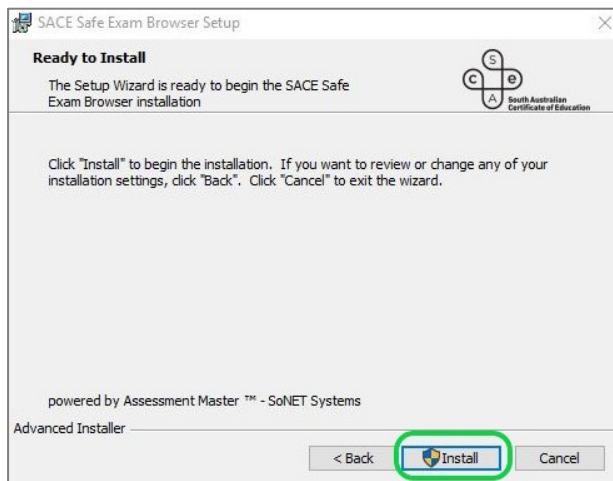
**Note:**

The End-User license agreement relates to using Mozilla Firefox as the underlying browser engine for Safe Exam Browser. The agreement contains approval for the use of Mozilla software with terms and conditions to ensure distributors cannot charge clients for the use of the software and Mozilla is indemnified from any liability for any damages caused using the software.

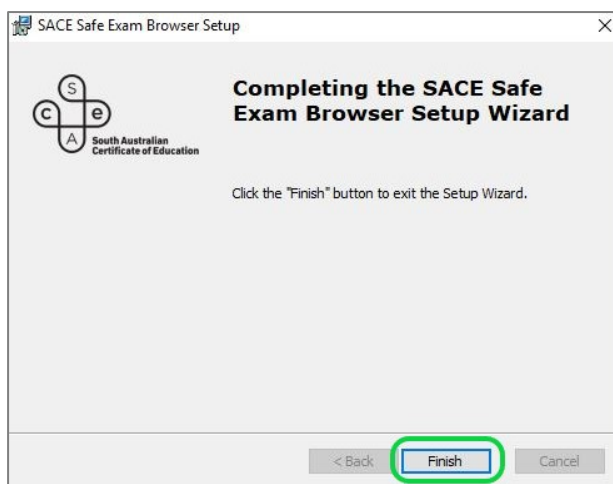
7. The 'Select Installation Folder' window will appear and click 'Next>'.



8. The next window to display is 'Ready to Install' click 'Install'. Allow time for the installation to run.



9. Click the 'Finish' button to exit 'Completing the SACE Safe Exam Browser Set-up Wizard'.



10. To confirm the SACE Exam browser installation is successful on the device.

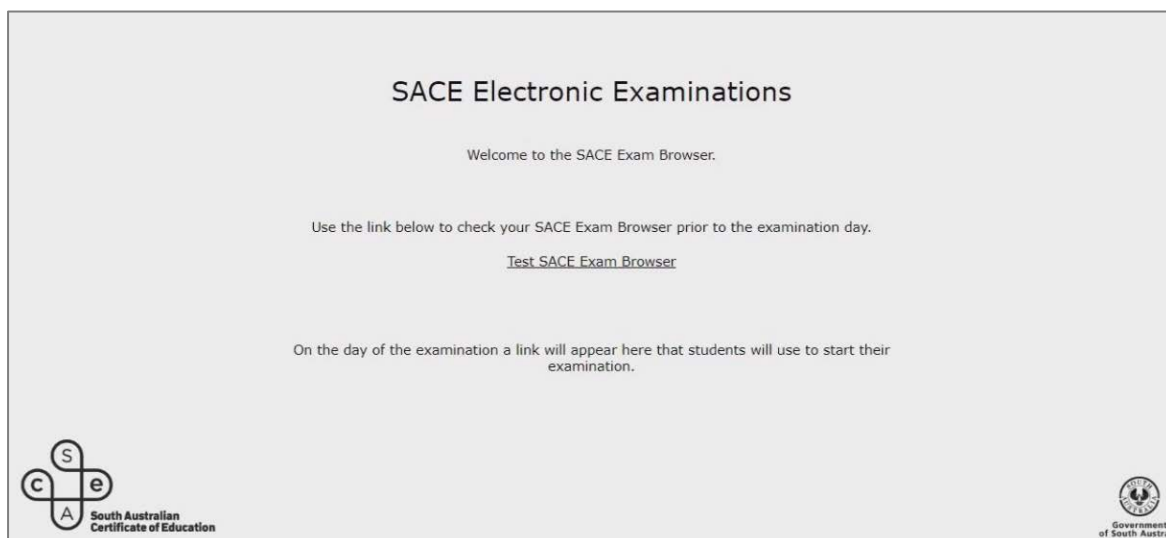
- a. Check the SACE Exam Browser shortcut icon appears on the desktop.



- b. Check via Start Menu>Recently added>SACE Safe Browser.

11. Now that the SACE Exam Browser is installed you will be able to access your exam on the day of the examination.

12. If you open the SACE Exam Browser before your scheduled exam time, the Welcome to the SACE Exam Browser page will display without the link required to start the examination.



13. If you open the SACE Exam Browser at the scheduled exam time, the Welcome to the SACE Exam Browser page will display with the link required to start the examination.

